

Calpain 1 antibody [9A4H8D3]

Cat. No. GTX23589

Host	Mouse
Clonality	Monoclonal
Isotype	IgG1
Applications	WB, ICC/IF, IHC-P, IHC-Fr
Reactivity	Human, Mouse, Rat, Yeast, Rabbit, Sheep, Bovine, Hamster, Pig, Fish, Arthropod

Package
100 µl

Applications

Application Note

*Optimal dilutions/concentrations should be determined by the researcher.

Suggested dilution	Recommended dilution
WB	2 µg/ml
ICC/IF	Assay dependent
IHC-P	Assay dependent
IHC-Fr	Assay dependent

Not tested in other applications.

Calculated MW 82 kDa. ([Note](#))

Product Note This antibody does not cross-react with m-calpain, n-calpain, calmodulin or calpastatin and it recognizes an epitope between amino acids 465-520 (domain III) of human mu-calpain.

Properties

Form	Liquid
Buffer	PBS, 0.1% BSA
Preservative	0.05% Sodium azide
Storage	Store as concentrated solution. Centrifuge briefly prior to opening vial. For short-term storage (1-2 weeks), store at 4°C. For long-term storage, aliquot and store at -20°C or below. Avoid multiple freeze-thaw cycles.
Concentration	1 mg/ml (Please refer to the vial label for the specific concentration.)
Immunogen	Purified bovine skeletal muscle 80 kDa mu-calpain subunit.
Purification	Protein A purified
Conjugation	Unconjugated



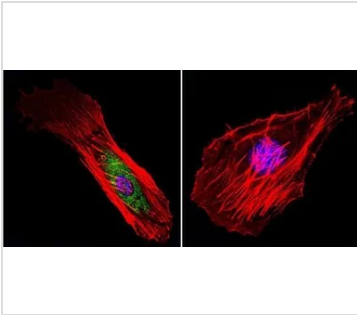
For full product information, images and publications, please visit our [website](#).

For laboratory research use only. Not for any clinical, therapeutic, or diagnostic use in humans or animals. Not for animal or human consumption.

Note

Purchasers shall not, and agree not to enable third parties to, analyze, copy, reverse engineer or otherwise attempt to determine the structure or sequence of the product.

DATA IMAGES



GTX23589 ICC/IF Image

ICC/IF analysis of HeLa cells using GTX23589 Calpain 1 antibody [9A4H8D3]. Cells were probed without (right) or with (left) an antibody.

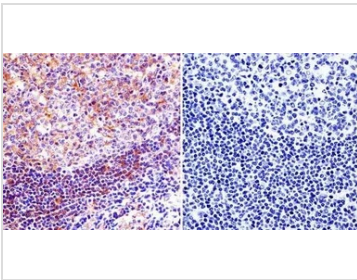
Green : Primary antibody

Blue : Nuclei

Red : Actin

Fixation : formaldehyde

Dilution : 1:100 overnight at 4 °C



GTX23589 IHC-P Image

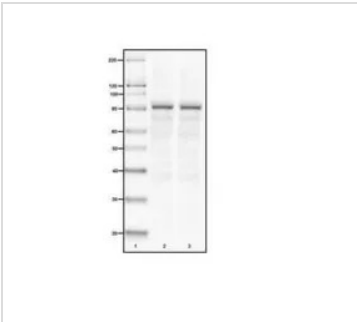
IHC-P analysis of human tonsil tissue using GTX23589 Calpain 1 antibody [9A4H8D3].

Left : Primary antibody

Right : Negative control without primary antibody

Antigen retrieval : heat induced antigen retrieval was performed using 10mM sodium citrate (pH6.0) buffer, microwaved for 8-15 minutes

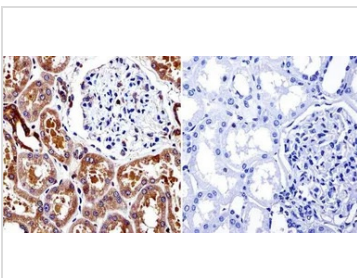
Dilution : 1:20



GTX23589 WB Image

WB analysis of 15 ug of HeLa cell lysate (lane 2), 15 ug of A431 cell lysate (lane 3) using GTX23589 Calpain 1 antibody [9A4H8D3].

Dilution : 1:500



GTX23589 IHC-P Image

IHC-P analysis of human kidney tissue using GTX23589 Calpain 1 antibody [9A4H8D3].

Left : Primary antibody

Right : Negative control without primary antibody

Antigen retrieval : heat induced antigen retrieval was performed using 10mM sodium citrate (pH6.0) buffer, microwaved for 8-15 minutes

Dilution : 1:20



For full product information, images and publications, please visit our [website](#).