

## Calpain 1 antibody [9A4H8D3]

Cat. No. GTX23589

<b>Host</b>	Mouse
<b>Clonality</b>	Monoclonal
<b>Isotype</b>	IgG1
<b>Applications</b>	WB, ICC/IF, IHC-P, IHC-Fr
<b>Reactivity</b>	Human, Mouse, Rat, Yeast, Rabbit, Sheep, Bovine, Hamster, Pig, Fish, Arthropod

**Package**  
100 µl

## Applications

## Application Note

\*Optimal dilutions/concentrations should be determined by the researcher.

Suggested dilution	Recommended dilution
WB	2 µg/ml
ICC/IF	Assay dependent
IHC-P	Assay dependent
IHC-Fr	Assay dependent

Not tested in other applications.

<b>Calculated MW</b>	82 kDa. ( <a href="#">Note</a> )
<b>Product Note</b>	This antibody does not cross-react with m-calpain, n-calpain, calmodulin or calpastatin and it recognizes an epitope between amino acids 465-520 (domain III) of human mu-calpain.

## Properties

<b>Form</b>	Liquid
<b>Buffer</b>	PBS, 0.1% BSA
<b>Preservative</b>	0.05% Sodium azide
<b>Storage</b>	Store as concentrated solution. Centrifuge briefly prior to opening vial. For short-term storage (1-2 weeks), store at 4°C. For long-term storage, aliquot and store at -20°C or below. Avoid multiple freeze-thaw cycles.
<b>Concentration</b>	1 mg/ml (Please refer to the vial label for the specific concentration.)
<b>Immunogen</b>	Purified bovine skeletal muscle 80 kDa mu-calpain subunit.
<b>Purification</b>	Protein A purified
<b>Conjugation</b>	Unconjugated



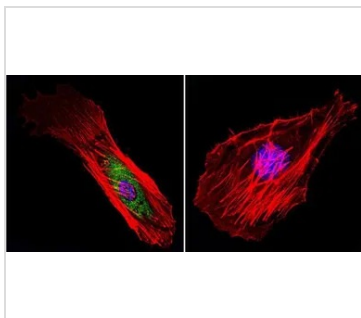
For full product information, images and publications, please visit our [website](#).

For laboratory research use only. Not for any clinical, therapeutic, or diagnostic use in humans or animals. Not for animal or human consumption.

## Note

Purchasers shall not, and agree not to enable third parties to, analyze, copy, reverse engineer or otherwise attempt to determine the structure or sequence of the product.

## DATA IMAGES



### GTX23589 ICC/IF Image

ICC/IF analysis of HeLa cells using GTX23589 Calpain 1 antibody [9A4H8D3]. Cells were probed without (right) or with (left) an antibody.

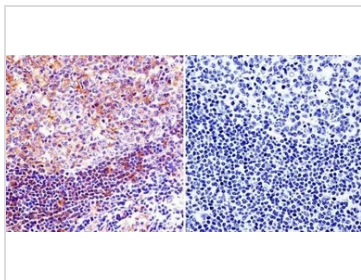
Green : Primary antibody

Blue : Nuclei

Red : Actin

Fixation : formaldehyde

Dilution : 1:100 overnight at 4 °C



### GTX23589 IHC-P Image

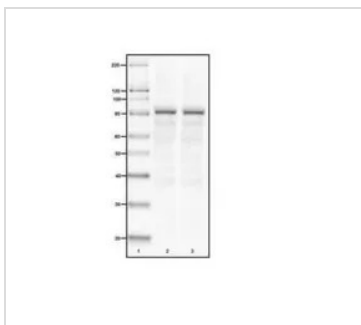
IHC-P analysis of human tonsil tissue using GTX23589 Calpain 1 antibody [9A4H8D3].

Left : Primary antibody

Right : Negative control without primary antibody

Antigen retrieval : heat induced antigen retrieval was performed using 10mM sodium citrate (pH6.0) buffer, microwaved for 8-15 minutes

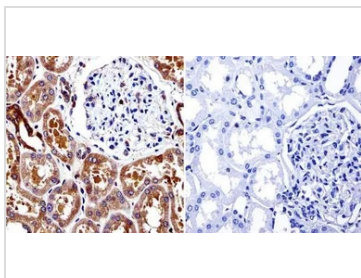
Dilution : 1:20



### GTX23589 WB Image

WB analysis of 15 ug of HeLa cell lysate (lane 2), 15 ug of A431 cell lysate (lane 3) using GTX23589 Calpain 1 antibody [9A4H8D3].

Dilution : 1:500



### GTX23589 IHC-P Image

IHC-P analysis of human kidney tissue using GTX23589 Calpain 1 antibody [9A4H8D3].

Left : Primary antibody

Right : Negative control without primary antibody

Antigen retrieval : heat induced antigen retrieval was performed using 10mM sodium citrate (pH6.0) buffer, microwaved for 8-15 minutes

Dilution : 1:20



For full product information, images and publications, please visit our [website](https://www.genetex.com).