

RAGE antibody

Cat. No. GTX23611

Host	Rabbit
Clonality	Polyclonal
Isotype	IgG
Applications	WB, IHC-P, IHC-Fr
Reactivity	Human, Mouse, Rat, Frog, Squirrel

References (20)

Package

100 µl

Applications

Application Note

Recommended Starting Dilutions: For ICC/IF: Use at a dilution of 1:200. For WB: 1:500-1:10000. For IHC-Fr: Use at a concentration of 1-2 ug/ml. For IHC-P: 1:100-1:1000. Optimal dilution / concentration should be determined by the end user.

Product Note KO/KD validation is based on published data (PMID: 26739898).

Properties

Form	Liquid
Buffer	PBS, 1% BSA, 20% Glycerol
Preservative	0.025% ProClin 300
Storage	Store as concentrated solution. Centrifuge briefly prior to opening vial. For short-term storage (1-2 weeks), store at 4°C. For long-term storage, aliquot and store at -20°C or below. Avoid multiple freeze-thaw cycles.
Concentration	0.33 mg/ml (Please refer to the vial label for the specific concentration.)
Immunogen	Synthetic peptides corresponding to residues C(362) W R K R Q P R (R/L) E E R K A P E S Q E D(380) of rat RAGE.
Purification	Purified by antigen-affinity chromatography.
Conjugation	Unconjugated

Note

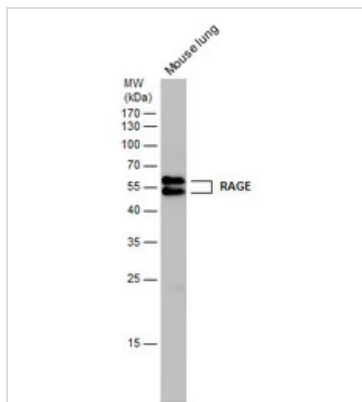
For laboratory research use only. Not for any clinical, therapeutic, or diagnostic use in humans or animals. Not for animal or human consumption.

Purchasers shall not, and agree not to enable third parties to, analyze, copy, reverse engineer or otherwise attempt to determine the structure or sequence of the product.



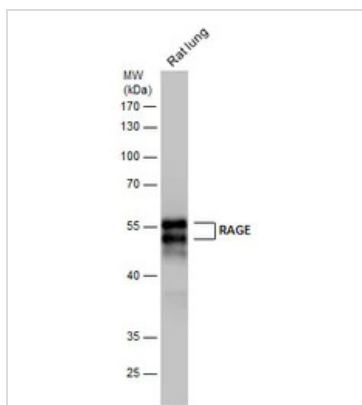
For full product information, images and publications, please visit our [website](#).

DATA IMAGES



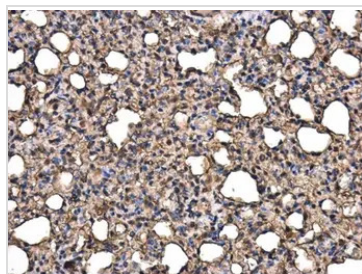
GTX23611 WB Image

Mouse tissue extract (50 µg) was separated by 12% SDS-PAGE, and the membrane was blotted with RAGE antibody (GTX23611) diluted at 1:5000. The HRP-conjugated anti-rabbit IgG antibody (GTX213110-01) was used to detect the primary antibody.



GTX23611 WB Image

Rat tissue extract (50 µg) was separated by 10% SDS-PAGE, and the membrane was blotted with RAGE antibody (GTX23611) diluted at 1:5000. The HRP-conjugated anti-rabbit IgG antibody (GTX213110-01) was used to detect the primary antibody.



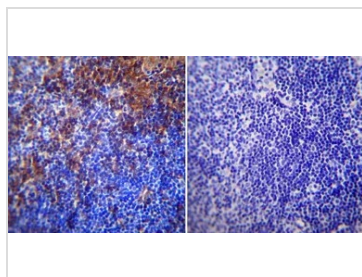
GTX23611 IHC-P Image

RAGE antibody detects RAGE protein in rat lung by immunohistochemical analysis.

Sample: Paraffin-embedded rat lung.

RAGE antibody (GTX23611) diluted at 1:400.

Antigen Retrieval: Citrate buffer, pH 6.0, 15 min



GTX23611 IHC-P Image

IHC-P analysis of normal mouse lymph node tissue with (left) or without (right) RAGE antibody at a dilution of 1:20. Heat induced antigen retrieval was performed using 10mM sodium citrate (pH6.0) buffer, microwaved for 8-15 minutes.

Antigen Retrieval: Trilogy™ (EDTA based, pH 8.0) buffer, 15min



For full product information, images and publications, please visit our [website](https://www.genetex.com).