

SERCA2 ATPase antibody

Cat. No. GTX23625

Host	Rabbit
Clonality	Polyclonal
Isotype	IgG
Applications	WB, IP, ChIP assay
Reactivity	Human, Mouse, Rat, Rabbit, Pig

References (1)

Package

50 µl

Applications

Application Note

*Optimal dilutions/concentrations should be determined by the researcher.

Suggested dilution	Recommended dilution
WB	1:1000 - 1:5000
IP	1:10 - 1:500
ChIP assay	1:10 - 1:500

Not tested in other applications.

Calculated MW 115 kDa. ([Note](#))

Properties

Form	Liquid
Buffer	Tris-Citrate/Phosphate
Preservative	0.09% Sodium azide
Storage	Store as concentrated solution. Centrifuge briefly prior to opening vial. Store at 4°C. DO NOT FREEZE.
Concentration	1 mg/ml (Please refer to the vial label for the specific concentration.)
Immunogen	The immunogen recognized by this antibody maps to a region between residue 475 and 525 of human ATPase, Ca++ transporter, cardiac muscle, slow twitch 2 using the numbering given in entry NP_733765.1 (GenelD 488).
Purification	Purified by antigen-affinity chromatography
Conjugation	Unconjugated

Note

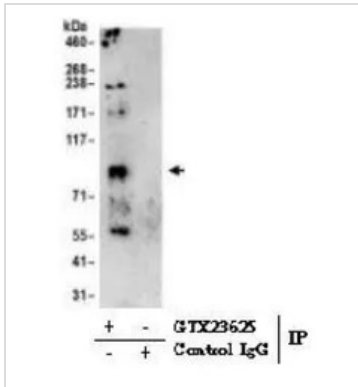
For laboratory research use only. Not for any clinical, therapeutic, or diagnostic use in humans or animals. Not for animal or human consumption.

Purchasers shall not, and agree not to enable third parties to, analyze, copy, reverse engineer or otherwise attempt to determine the structure or sequence of the product.



For full product information, images and publications, please visit our [website](#).

DATA IMAGES



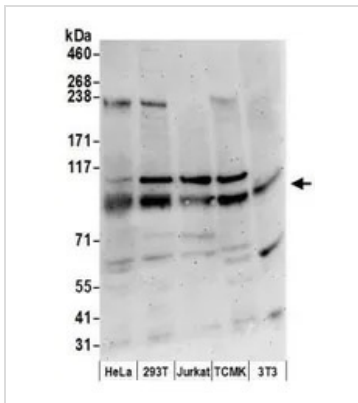
GTX23625 IP Image

IP analysis of 293T cell lysate using GTX23625 SERCA2 ATPase antibody.

IP protein : 0.5 -1.0 mg

Dilution : 1 µg/ml for WB ; 0.5-1 mg lysate / 6µg antibody for IP reaction

Loading: 20% of IP loaded



GTX23625 WB Image

WB analysis of HeLa, 293T, Jurkat, TCMK-1, and NIH3T3 cell lysates (in NETN lysis buffer) using GTX23625 SERCA2 ATPase antibody.

Loading : 50µg

Dilution : 1 µg/ml



For full product information, images and publications, please visit our [website](https://www.genetex.com).