

Pescadillo antibody

Cat. No. GTX23626

Host	Rabbit
Clonality	Polyclonal
Isotype	IgG
Applications	WB, ICC/IF
Reactivity	Mouse

Package
50 µl

Applications

Application Note

*Optimal dilutions/concentrations should be determined by the researcher.

Suggested dilution	Recommended dilution
WB	1:500 - 1:5000
ICC/IF	1:500 - 1:2500

Not tested in other applications.

Calculated MW 68 kDa. ([Note](#))

Properties

Form	Liquid
Buffer	Tris-Citrate/Phosphate
Preservative	0.1% Sodium azide
Storage	Store as concentrated solution. Centrifuge briefly prior to opening vial. Store at 4°C. DO NOT FREEZE.
Concentration	1 mg/ml (Please refer to the vial label for the specific concentration.)
Immunogen	The immunogen recognized by this antibody maps to a region between residue 475 and 525 of mouse Pescadillo using the numbering given in entry NP_075027.1 (GeneID 64934).
Purification	Purified by antigen-affinity chromatography
Conjugation	Unconjugated

Note

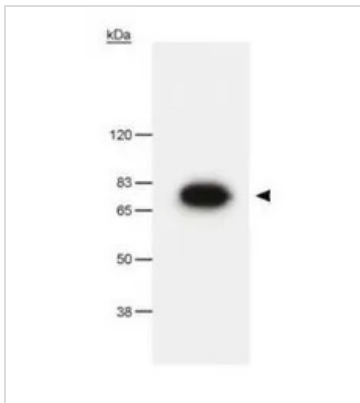
For laboratory research use only. Not for any clinical, therapeutic, or diagnostic use in humans or animals. Not for animal or human consumption.

Purchasers shall not, and agree not to enable third parties to, analyze, copy, reverse engineer or otherwise attempt to determine the structure or sequence of the product.



For full product information, images and publications, please visit our [website](#).

DATA IMAGES

**GTX23626 WB Image**

WB analysis of overexpressing Pescadillo cell lysate using GTX23626 Pescadillo antibody.



For full product information, images and publications, please visit our [website](#).