

## Kallikrein 4 antibody

Cat. No. GTX23636

Host	Rabbit
Clonality	Polyclonal
Isotype	IgG
Applications	WB, IHC-P, IHC-Fr, IP, ELISA
Reactivity	Human

Package  
100 µl

## Applications

## Application Note

\*Optimal dilutions/concentrations should be determined by the researcher.

Suggested dilution	Recommended dilution
WB	1:500 - 1:1000
IHC-P	1:10 - 1:500
IHC-Fr	1:10 - 1:500
IP	1:10 - 1:500
ELISA	1:100 - 1:2000

Not tested in other applications.

**Calculated MW** 27 kDa. ( [Note](#) )

**Product Note** Reacts with residues 242-254 [KFTIEWIEKTVQAS] of the human 39 kDa LKL-L1 protein.

## Properties

Form	Liquid
Buffer	PBS
Preservative	0.02% Sodium azide
Storage	Store as concentrated solution. Centrifuge briefly prior to opening vial. For short-term storage (1-2 weeks), store at 4°C. For long-term storage, aliquot and store at -20°C or below. Avoid multiple freeze-thaw cycles.
Concentration	1 mg/ml (Please refer to the vial label for the specific concentration.)
Immunogen	A synthetic peptide corresponding to residues 242-254 [KFTIEWIEKTVQAS] of the human 39 kDa LKL-L1 protein.
Purification	Purified by antigen-affinity chromatography
Conjugation	Unconjugated



For full product information, images and publications, please visit our [website](#).

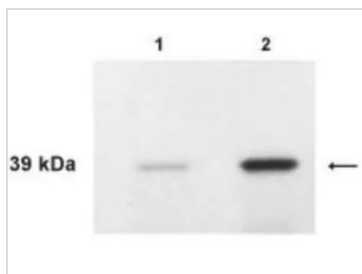
Date 2026 / 01 / 06 Page 1 of 2

For laboratory research use only. Not for any clinical, therapeutic, or diagnostic use in humans or animals. Not for animal or human consumption.

**Note**

Purchasers shall not, and agree not to enable third parties to, analyze, copy, reverse engineer or otherwise attempt to determine the structure or sequence of the product.

## DATA IMAGES



### GTX23636 WB Image

WB analysis of RL95-2 (lane 1) and KLE (lane 2) cell lysate using GTX23636 Kallikrein 4 antibody.  
Dilution : 1:1000



For full product information, images and publications, please visit our [website](https://www.genetex.com).