

Rad51B antibody [1 H3/13]

Cat. No. GTX23637

Host	Mouse
Clonality	Monoclonal
Isotype	IgG2a
Applications	WB
Reactivity	Human, Monkey, Primate

Package
100 µl

Applications

Application Note

*Optimal dilutions/concentrations should be determined by the researcher.

Suggested dilution	Recommended dilution
WB	1:1000

Not tested in other applications.

Calculated MW 42 kDa. ([Note](#))

Product Note

Does not cross-react with Rad51C, Rad51D, Rad51, XRCC2, or XRCC3 in Western analysis.
We do not recommend use of this product for Mouse samples.

Properties

Form	Liquid
Buffer	Ascites
Preservative	0.1% Sodium azide
Storage	Store as concentrated solution. Centrifuge briefly prior to opening vial. For short-term storage (1-2 weeks), store at 4°C. For long-term storage, aliquot and store at -20°C or below. Avoid multiple freeze-thaw cycles.
Immunogen	His-tagged human Rad51L1, overexpressed in E. coli. [UniProt# O15315]
Purification	Unpurified
Conjugation	Unconjugated

Note

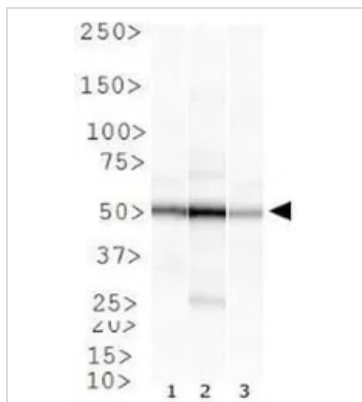
For laboratory research use only. Not for any clinical, therapeutic, or diagnostic use in humans or animals. Not for animal or human consumption.

Purchasers shall not, and agree not to enable third parties to, analyze, copy, reverse engineer or otherwise attempt to determine the structure or sequence of the product.



For full product information, images and publications, please visit our [website](#).

DATA IMAGES



GTX23637 WB Image

WB analysis of (1) HeLa, (2) HepG2, and (3) COS-7 cell lysate using GTX23637 Rad51B antibody [1 H3/13].



For full product information, images and publications, please visit our [website](#).