

## F1A alpha antibody

**Cat. No. GTX23686**

<b>Host</b>	Rabbit
<b>Clonality</b>	Polyclonal
<b>Isotype</b>	IgG
<b>Applications</b>	WB, IHC-P, ELISA
<b>Reactivity</b>	Human, Mouse, Rat

**Package**  
100 µg

## Applications

**Application Note**

\*Optimal dilutions/concentrations should be determined by the researcher.

Suggested dilution	Recommended dilution
WB	1 µg/ml
IHC-P	Assay dependent
ELISA	Assay dependent

Not tested in other applications.

**Calculated MW** 70 kDa. ([Note](#))

## Properties

<b>Form</b>	Liquid
<b>Buffer</b>	PBS
<b>Preservative</b>	0.02% Sodium azide
<b>Storage</b>	Store as concentrated solution. Centrifuge briefly prior to opening vial. For short-term storage (1-2 weeks), store at 4°C. For long-term storage, aliquot and store at -20°C or below. Avoid multiple freeze-thaw cycles.
<b>Concentration</b>	Batch dependent (Please refer to the vial label for the specific concentration.)
<b>Immunogen</b>	Peptide corresponding to aa 609- 622 of human F1A (accession no. AAF05314). This sequence is identical to that of mouse.
<b>Purification</b>	Purified by affinity chromatography
<b>Conjugation</b>	Unconjugated

**Note**

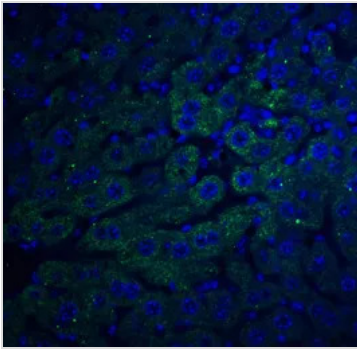
For laboratory research use only. Not for any clinical, therapeutic, or diagnostic use in humans or animals. Not for animal or human consumption.

Purchasers shall not, and agree not to enable third parties to, analyze, copy, reverse engineer or otherwise attempt to determine the structure or sequence of the product.



For full product information, images and publications, please visit our [website](#).

DATA IMAGES



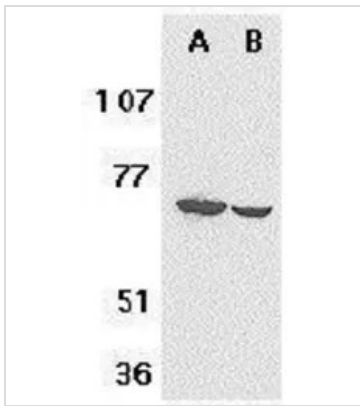
**GTX23686 IHC-P Image**

IHC-P analysis of mouse liver tissue using GTX23686 F1A alpha antibody.

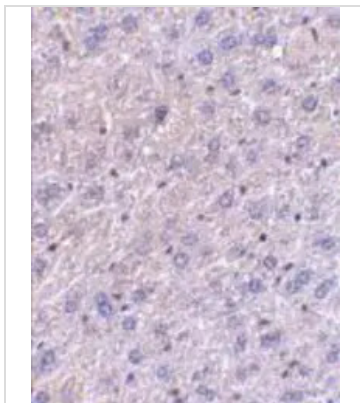
Green : Primary antibody

Blue : DAPI

Dilution : 20 µg/ml

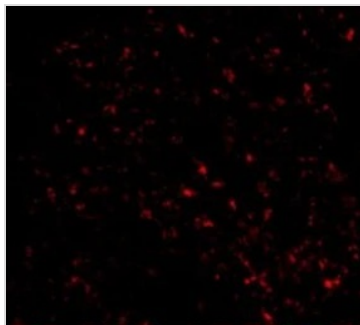


**GTX23686 WB Image**



**GTX23686 IHC-P Image**

Immunohistochemical staining of F1Aα in mouse liver tissue with F1Aα antibody (GTX23686) at 5ug/ml.



**GTX23686 IHC-P Image**

IHC-P analysis of Mouse Liver cells using GTX23686 F1A alpha antibody.

Dilution : 20 µg/ml



For full product information, images and publications, please visit our [website](#).