

# Ap3D1 antibody

**Cat. No. GTX23705**

<b>Host</b>	Goat
<b>Clonality</b>	Polyclonal
<b>Isotype</b>	IgG
<b>Applications</b>	WB, IP, ELISA
<b>Reactivity</b>	Human

**Package**  
100 µg

## Applications

### Application Note

\*Optimal dilutions/concentrations should be determined by the researcher.

Suggested dilution	Recommended dilution
WB	1:500-1:2000
IP	1:100
ELISA	1:5000-1:20000

Not tested in other applications.

**Calculated MW** 130 kDa. ([Note](#))

## Properties

<b>Form</b>	Liquid
<b>Buffer</b>	20mM Potassium Phosphate, 150mM NaCl
<b>Preservative</b>	0.01% Sodium azide
<b>Storage</b>	Store as concentrated solution. Centrifuge briefly prior to opening vial. For short-term storage (1-2 weeks), store at 4°C. For long-term storage, aliquot and store at -20°C or below. Avoid multiple freeze-thaw cycles.
<b>Concentration</b>	1.6 mg/ml (Please refer to the vial label for the specific concentration.)
<b>Immunogen</b>	Synthetic peptide corresponding to an internal region near aa 675-700 of Human AP3D1.
<b>Purification</b>	Purified by antigen-affinity chromatography. From serum
<b>Conjugation</b>	Unconjugated

### Note

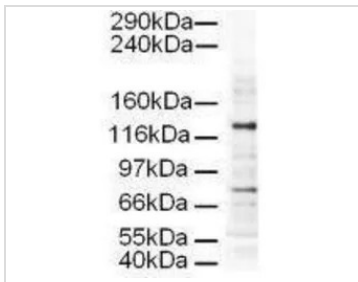
For laboratory research use only. Not for any clinical, therapeutic, or diagnostic use in humans or animals. Not for animal or human consumption.

Purchasers shall not, and agree not to enable third parties to, analyze, copy, reverse engineer or otherwise attempt to determine the structure or sequence of the product.



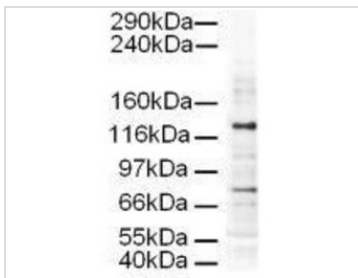
For full product information, images and publications, please visit our [website](#).

## DATA IMAGES



### GTx23705 WB Image

Western blot using GeneTex's Affinity Purified anti-AP3D1 antibody shows detection of a 130-kDa band corresponding to Human AP3D1 in a HeLa whole cell lysate. The lower molecular weight band most likely represents non-specific binding. Approximately 20 µg of lysate was run on a SDS-PAGE and transferred onto nitrocellulose followed by reaction with a 1:500 dilution of anti-AP3D1 antibody. Detection occurred using a 1:5,000 dilution of HRP-labeled Rabbit anti-Goat IgG for 1 hour at room temperature. A chemiluminescence system was used for signal detection (Roche) using a 30-sec exposure time.



### GTx23705 WB Image

WB analysis of HeLa whole cell lysate using GTx23705 Ap3D1 antibody.

Loading : 20 µg

Dilution : 1:500



For full product information, images and publications, please visit our [website](#).