

AP1G1 antibody

Cat. No. GTX23706

Host	Goat
Clonality	Polyclonal
Isotype	IgG
Applications	WB, IP, ELISA
Reactivity	Human

Package
100 µg

Applications

Application Note

*Optimal dilutions/concentrations should be determined by the researcher.

Suggested dilution	Recommended dilution
WB	1:500-1:2000
IP	1:100
ELISA	1:2000-1:8000

Not tested in other applications.

Calculated MW 91 kDa. ([Note](#))

Properties

Form	Liquid
Buffer	20mM Potassium Phosphate, 150mM NaCl
Preservative	0.01% Sodium azide
Storage	Store as concentrated solution. Centrifuge briefly prior to opening vial. For short-term storage (1-2 weeks), store at 4°C. For long-term storage, aliquot and store at -20°C or below. Avoid multiple freeze-thaw cycles.
Concentration	0.7 mg/ml (Please refer to the vial label for the specific concentration.)
Immunogen	Synthetic peptide corresponding to an internal region near aa 625-675 of Human AP1G1.
Purification	Purified by antigen-affinity chromatography. From serum
Conjugation	Unconjugated

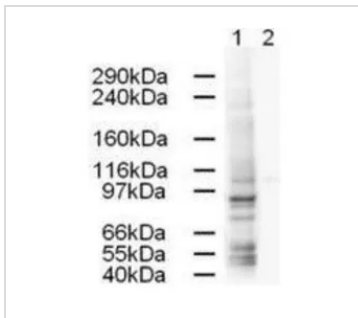
Note

For laboratory research use only. Not for any clinical, therapeutic, or diagnostic use in humans or animals. Not for animal or human consumption.

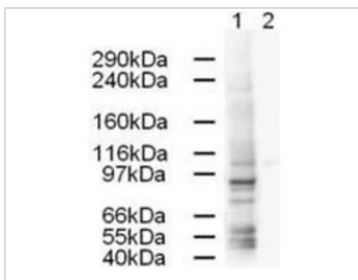
Purchasers shall not, and agree not to enable third parties to, analyze, copy, reverse engineer or otherwise attempt to determine the structure or sequence of the product.



For full product information, images and publications, please visit our [website](#).

DATA IMAGES

GTX23706 WB Image

Western blot using GeneTex Affinity Purified anti-AP1G1 antibody (GTX23706) shows strong detection of a 91-kDa band corresponding to Human AP1G1 in a HeLa whole cell lysate (lane 1). Peptide competition (using 1 µg/ml of the immunizing peptide) blocks the specific reactivity of this antibody with AP1G1 (lane 2). Approximately 20 µg of each lysate was run on a SDS-PAGE and transferred onto nitrocellulose followed by reaction with a 1:500 dilution of anti-AP1G1 antibody. Detection occurred using a 1:5,000 dilution of HRP-labeled Rabbit anti-Goat IgG for 1 hour at room temperature. A chemi-luminescence system was used for signal detection (Roche) using a 60-sec exposure time.


GTX23706 WB Image

WB analysis of HeLa whole cell lysate using GTX23706 AP1G1 antibody prior incubated with (Lane 2) or without (Lane 1) blocking peptide.

Loading : 20 µg

Dilution : 1:500



For full product information, images and publications, please visit our [website](https://www.genetex.com).