

Ap2A antibody

Cat. No. GTX23707

Host	Goat
Clonality	Polyclonal
Isotype	IgG
Applications	WB, IP, ELISA
Reactivity	Human

Package
50 µg

Applications

Application Note

*Optimal dilutions/concentrations should be determined by the researcher.

Suggested dilution	Recommended dilution
WB	1:500-1:2000
IP	1:100
ELISA	1:5000-1:20000

Not tested in other applications.

Properties

Form	Liquid
Buffer	20mM Potassium Phosphate, 150mM NaCl
Preservative	0.01% Sodium azide
Storage	Store as concentrated solution. Centrifuge briefly prior to opening vial. For short-term storage (1-2 weeks), store at 4°C. For long-term storage, aliquot and store at -20°C or below. Avoid multiple freeze-thaw cycles.
Concentration	1.7 mg/ml (Please refer to the vial label for the specific concentration.)
Immunogen	Synthetic peptide corresponding to the N-Terminal region near aa 1-25 of Human AP2A1 and AP2A2 proteins.
Purification	Purified by antigen-affinity chromatography. From serum
Conjugation	Unconjugated

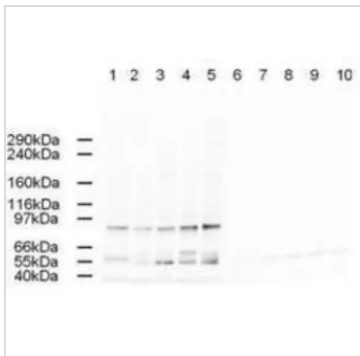
Note

For laboratory research use only. Not for any clinical, therapeutic, or diagnostic use in humans or animals. Not for animal or human consumption.

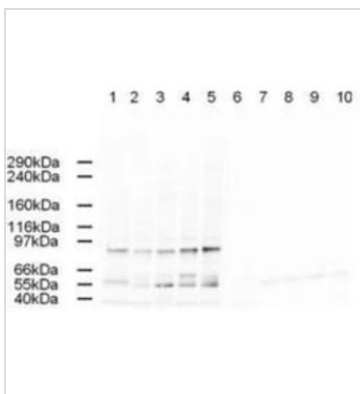
Purchasers shall not, and agree not to enable third parties to, analyze, copy, reverse engineer or otherwise attempt to determine the structure or sequence of the product.



For full product information, images and publications, please visit our [website](#).

DATA IMAGES

GTX23707 WB Image

Western blot using GeneTex's Affinity Purified anti-AP2A antibody shows detection of a band just below 100 kDa corresponding to Human AP2A1 in various preparations. Lane 1 - HeLa nuclear extract, Lane 2 - HeLa, Lane 3 - 293, Lane 4 - A431 and Lane 5 - Jurkat whole cell lysates. In lanes 6-10 the antibody was preincubated with 1 µg/ml of the immunizing peptide which effectively blocks the specific reactivity of this antibody with AP2A. Approximately 20 µg of each lysate was run on a SDS-PAGE and transferred onto nitrocellulose followed by reaction with a 1:500 dilution of anti-AP2A antibody. Detection occurred using a 1:5,000 dilution of HRP-labeled Rabbit anti-Goat IgG for 1 hour at room temperature. A chemiluminescence system was used for signal detection (Roche) using a 60-sec exposure time.


GTX23707 WB Image

WB analysis of various samples using GTX23707 Ap2A antibody prior incubated with (Lane 6-10) or without (Lane 1-5) blocking peptide.

- Lane 1 and 6 : HeLa nuclear extracts
- Lane 2 and 7 : HeLa whole cell lysates
- Lane 3 and 8 : 293T whole cell lysates
- Lane 4 and 9 : A431 whole cell lysates
- Lane 5 and 10 : Jurkat whole cell lysates
- Loading : 20 µg
- Dilution : 1:500



For full product information, images and publications, please visit our [website](#).