

Claspin antibody

Cat. No. GTX23720

Host	Rabbit
Clonality	Polyclonal
Isotype	IgG
Applications	WB, IHC-P, IP, PLA
Reactivity	Human

References (1)

Package

50 µl

Applications

Application Note

*Optimal dilutions/concentrations should be determined by the researcher.

Suggested dilution	Recommended dilution
WB	1:500 - 1:2500
IHC-P	1:500 - 1:2000
IP	1 - 5 µg/mg lysate
PLA	1:1000 - 1:10000

Not tested in other applications.

Calculated MW 151 kDa. ([Note](#))

Properties

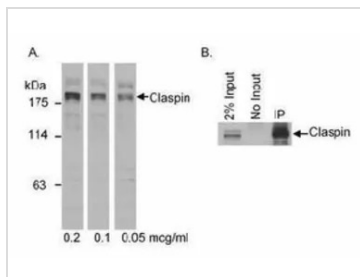
Form	Liquid
Buffer	Tris-Citrate/Phosphate
Preservative	0.09% Sodium azide
Storage	Store as concentrated solution. Centrifuge briefly prior to opening vial. Store at 4°C. DO NOT FREEZE.
Concentration	1 mg/ml (Please refer to the vial label for the specific concentration.)
Immunogen	The immunogen recognized by this antibody maps to a region between residues 450 and 500 of human Claspin using the numbering given in entry AAG24515.1 (GenelD 63967).
Purification	Purified by antigen-affinity chromatography
Conjugation	Unconjugated

Note

For laboratory research use only. Not for any clinical, therapeutic, or diagnostic use in humans or animals. Not for animal or human consumption.

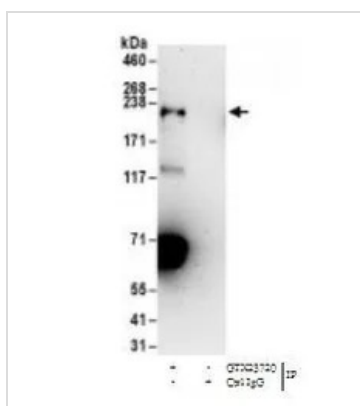
Purchasers shall not, and agree not to enable third parties to, analyze, copy, reverse engineer or otherwise attempt to determine the structure or sequence of the product.

For full product information, images and publications, please visit our [website](#).

DATA IMAGES

GTX23720 IP Image

(A)WB analysis of HeLa cell lysate using GTX23720 Claspin antibody.

(B)IP analysis of HeLa cell lysate using GTX23720 Claspin antibody.

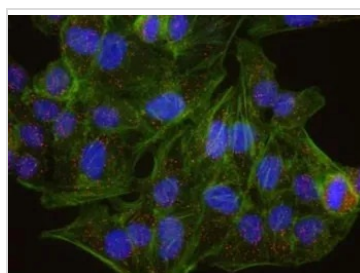

GTX23720 IP Image

IP analysis of HeLa cell lysate using GTX23720 Claspin antibody.

IP reaction : 6µg antibody / 1.0 mg lysate

Dilution : 1 µg/ml

Loading: 20% of IP reaction

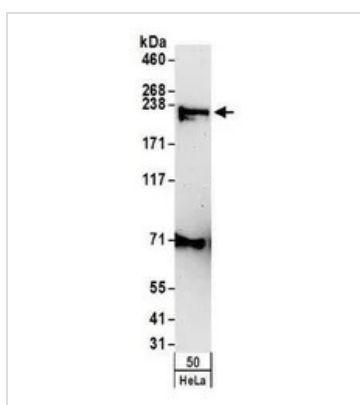

GTX23720 PLA Image

PLA analysis of HeLa cells using GTX23720 Claspin antibody and anti-human CHK1 antibody.

Green : Actin

Red : positive signal

Blue : DAPI


GTX23720 WB Image

WB analysis of HeLa cell lysate using GTX23720 Claspin antibody.

Dilution : 1 µg/ml

Loading : 50µg



For full product information, images and publications, please visit our [website](https://www.genetex.com).