

## MCM7 antibody

Cat. No. GTX23732

Host	Goat
Clonality	Polyclonal
Isotype	IgG
Applications	WB, PLA
Reactivity	Human, Mouse

Package

50 µl

## Applications

## Application Note

\*Optimal dilutions/concentrations should be determined by the researcher.

Suggested dilution	Recommended dilution
WB	1:2000 - 1:10000
PLA	1:1000 - 1:20000

Not tested in other applications.

Calculated MW 81 kDa. ( [Note](#) )

## Properties

Form	Liquid
Buffer	Tris-Citrate/Phosphate
Preservative	0.09% Sodium azide
Storage	Store as concentrated solution. Centrifuge briefly prior to opening vial. Store at 4°C. DO NOT FREEZE.
Concentration	1 mg/ml (Please refer to the vial label for the specific concentration.)
Immunogen	The immunogen recognized by this antibody maps to a region between residues 300 and 350 of human Minichromosome Maintenance 7 using the numbering given in entry NP_005907.3 (GenelD 4176).
Purification	Purified by antigen-affinity chromatography
Conjugation	Unconjugated

## Note

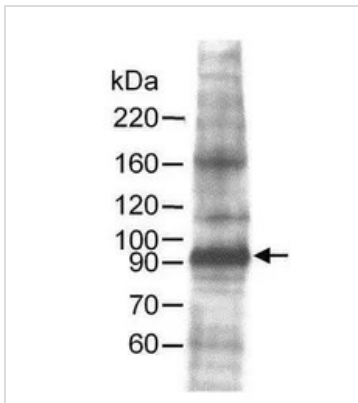
For laboratory research use only. Not for any clinical, therapeutic, or diagnostic use in humans or animals. Not for animal or human consumption.

Purchasers shall not, and agree not to enable third parties to, analyze, copy, reverse engineer or otherwise attempt to determine the structure or sequence of the product.



For full product information, images and publications, please visit our [website](#).

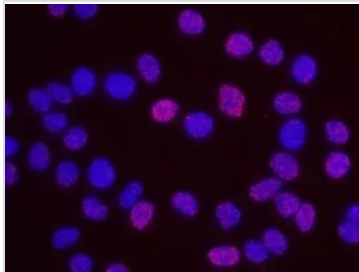
## DATA IMAGES



### GTX23732 WB Image

WB analysis of HeLa cell lysate using GTX23732 MCM7 antibody.

Dilution : 0.25 µg/ml

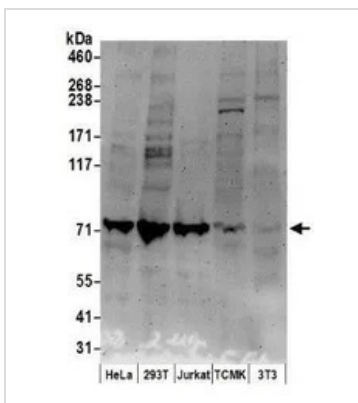


### GTX23732 PLA Image

PLA analysis of HeLa cells using GTX23732 MCM7 antibody and anti-human MCM2 antibody.

Red : positive signal

Blue : DAPI



### GTX23732 WB Image

WB analysis of HeLa, 293T, Jurkat, TCMK-1, and NIH3T3 cell lysates using GTX23732 MCM7 antibody.

Loading : 50µg

Dilution : 2 µg/ml



For full product information, images and publications, please visit our [website](https://www.genetex.com).