

RAD23A antibody

Cat. No. GTX23836

Host	Goat
Clonality	Polyclonal
Isotype	IgG
Applications	WB, ELISA
Reactivity	Human

Package
50 µg

Applications

Application Note

*Optimal dilutions/concentrations should be determined by the researcher.

Suggested dilution	Recommended dilution
WB	1:500-1:2000
ELISA	1:4000-1:16000

Not tested in other applications.

Calculated MW 40 kDa. ([Note](#))

Properties

Form	Liquid
Buffer	20mM Potassium Phosphate, 150mM NaCl
Preservative	0.01% Sodium azide
Storage	Store as concentrated solution. Centrifuge briefly prior to opening vial. For short-term storage (1-2 weeks), store at 4°C. For long-term storage, aliquot and store at -20°C or below. Avoid multiple freeze-thaw cycles.
Concentration	1.2 mg/ml (Please refer to the vial label for the specific concentration.)
Immunogen	Synthetic peptide corresponding to an internal region near aa 115-140 of human HR23A protein.
Purification	Purified by antigen-affinity chromatography.
Conjugation	Unconjugated

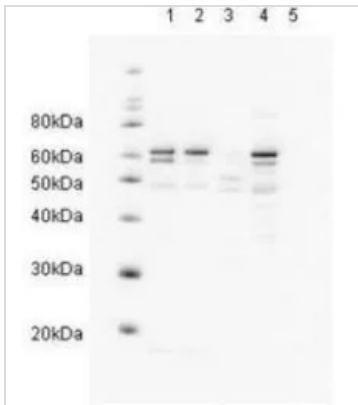
Note

For laboratory research use only. Not for any clinical, therapeutic, or diagnostic use in humans or animals. Not for animal or human consumption.

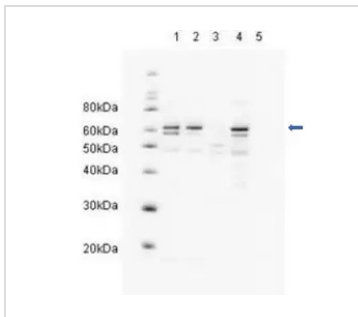
Purchasers shall not, and agree not to enable third parties to, analyze, copy, reverse engineer or otherwise attempt to determine the structure or sequence of the product.



For full product information, images and publications, please visit our [website](#).

DATA IMAGES

GTX23836 WB Image

Western blot showing GeneTex's Affinity Purified anti-HR23A antibody detects endogenous human HR23A. Reactivity is shown against HeLa nuclear extract (lane 1) and HeLa (lane 2), A431 (lane 3), Jurkat (lane 4) and 293 whole cell lysates (lane 5). Comparison to a molecular weight marker (at left) indicates a band of ~60 kDa corresponding to HR23A. The blot was incubated with a 1:500 dilution of the antibody at room temperature followed by detection using HRP conjugated Rb-a-Goat IgG and chemiluminescence reagent with a 30-min exposure time. Other detection systems will yield similar results.


GTX23836 WB Image

WB analysis of various samples using GTX23836 RAD23A antibody.

Lane 1 : HeLa nuclear extract

Lane 2 : HeLa whole cell lysate

Lane 3 : A431 whole cell lysate

Lane 4 : Jurkat whole cell lysate

Lane 5 : 293T whole cell lysate

Dilution : 1:500



For full product information, images and publications, please visit our [website](https://www.genetex.com).