

## CCR10 antibody

**Cat. No. GTX23904**

<b>Host</b>	Goat
<b>Clonality</b>	Polyclonal
<b>Isotype</b>	IgG
<b>Applications</b>	WB, IHC-P, FCM, ELISA
<b>Reactivity</b>	Human, Mouse

**Package**

100 µg

## Applications

**Application Note**

\*Optimal dilutions/concentrations should be determined by the researcher.

Suggested dilution	Recommended dilution
WB	1:500
IHC-P	1:125
FCM	1:12
ELISA	1:37,500

Not tested in other applications.

**Calculated MW** 38 kDa. ( [Note](#) )**Product Note** Peptide sequence is < 50 % identical to other human chemokine receptors in this region.

## Properties

<b>Form</b>	Liquid
<b>Buffer</b>	10mM KHPO <sub>4</sub> , 140mM NaCl, 0.1% BSA
<b>Preservative</b>	0.1% Sodium azide
<b>Storage</b>	Store as concentrated solution. Centrifuge briefly prior to opening vial. For short-term storage (1-2 weeks), store at 4°C. For long-term storage, aliquot and store at -20°C or below. Avoid multiple freeze-thaw cycles.
<b>Concentration</b>	Batch dependent (Please refer to the vial label for the specific concentration.)
<b>Immunogen</b>	Synthetic peptide VSWGHHYSGDEEDAYSAPLELC corresponding to amino acids 9-31 of human CCR10
<b>Purification</b>	Purified by affinity chromatography
<b>Conjugation</b>	Unconjugated

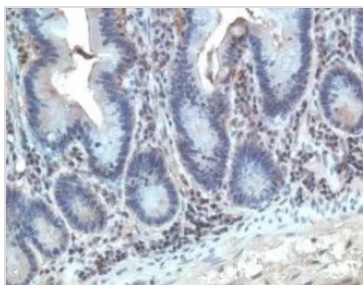
For full product information, images and publications, please visit our [website](#).

## Note

For laboratory research use only. Not for any clinical, therapeutic, or diagnostic use in humans or animals. Not for animal or human consumption.

Purchasers shall not, and agree not to enable third parties to, analyze, copy, reverse engineer or otherwise attempt to determine the structure or sequence of the product.

## DATA IMAGES



### GTX23904 IHC-P Image

IHC-P analysis of human tonsil tissue using GTX23904 CCR10 antibody.



For full product information, images and publications, please visit our [website](#).