

Integrin alpha 2b + beta 3 antibody [IVA30]

Cat. No. GTX23919

Host	Mouse
Clonality	Monoclonal
Isotype	IgG2
Applications	ICC/IF, FCM, IP, ELISA
Reactivity	Human, Bovine

Package
100 µg

Applications

Application Note

*Optimal dilutions/concentrations should be determined by the researcher.

Suggested dilution	Recommended dilution
ICC/IF	Assay dependent
FCM	Assay dependent
IP	Assay dependent
ELISA	Assay dependent

Not tested in other applications.

Properties

Form	Liquid
Buffer	PBS
Preservative	15mM Sodium azide
Storage	Store as concentrated solution. Centrifuge briefly prior to opening vial. Store at 4°C. DO NOT FREEZE.
Concentration	1 mg/ml (Please refer to the vial label for the specific concentration.)
Immunogen	Bovine trombocytes.
Purification	Protein A purified
Conjugation	Unconjugated

Note

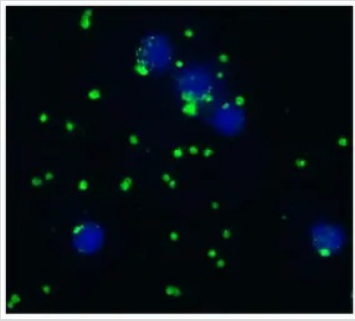
For laboratory research use only. Not for any clinical, therapeutic, or diagnostic use in humans or animals. Not for animal or human consumption.

Purchasers shall not, and agree not to enable third parties to, analyze, copy, reverse engineer or otherwise attempt to determine the structure or sequence of the product.



For full product information, images and publications, please visit our [website](#).

DATA IMAGES

**GTX23919 ICC/IF Image**

ICC/IF analysis of acetone/methanol fixed bovine peripheral blood (thrombocyte-enriched suspension) using GTX23919 Integrin alpha 2b + beta 3 antibody [IVA30].

Green : Primary antibody

Blue : DAPI



For full product information, images and publications, please visit our [website](#).