

## Cyclin E antibody [HE12]

Cat. No. GTX23927

Host	Mouse
Clonality	Monoclonal
Isotype	IgG1
Application	WB, IHC-P
Reactivity	Human, Mouse

Reference ( 7 )  
Package  
500 µl

## APPLICATION

## Application Note

\*Optimal dilutions/concentrations should be determined by the researcher.

Suggested dilution	Recommended dilution
WB	Assay dependent
IHC-P	1:100-1:200

**Note : Recommendations for antigen retrieval : EDTA buffer pH 8.0 at room temperature for 30 mins.**

Not tested in other applications.

**Calculated MW** 47 kDa. ( [Note](#) )

## PROPERTIES

Form	Liquid
Buffer	PBS
Preservative	0.09% Sodium azide
Storage	Store as concentrated solution. Centrifuge briefly prior to opening vial. Store at 4°C.
Concentration	Batch dependent (Please refer to the vial label for the specific concentration.)
Immunogen	Synthetic peptide corresponding to human cyclin E protein.
Purification	Purified IgG
Conjugation	Unconjugated

## Note

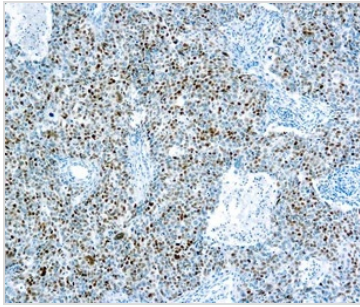
For laboratory research use only. Not for any clinical, therapeutic, or diagnostic use in humans or animals. Not for animal or human consumption.

Purchasers shall not, and agree not to enable third parties to, analyze, copy, reverse engineer or otherwise attempt to determine the structure or sequence of the product.



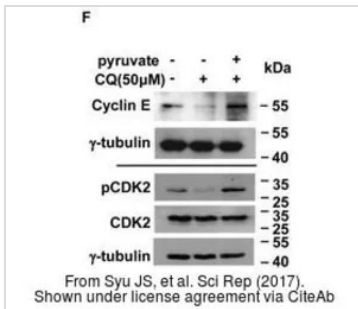
For full product information, images and publications, please visit our [website](#).

DATA IMAGES



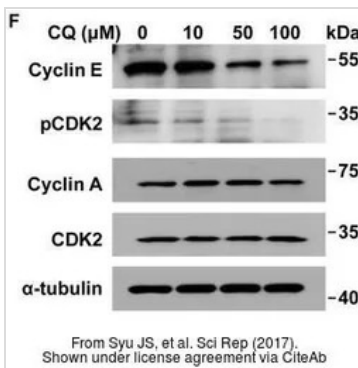
**GTX23927 IHC-P Image**

IHC-P analysis of human breast carcinoma tissue using GTX23927 Cyclin E antibody [HE12].



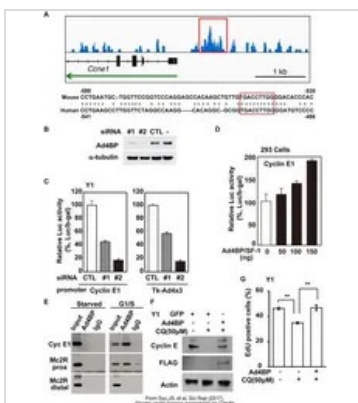
**GTX23927 WB Image**

The data was published in the journal Sci Rep in 2017. [PMID: 28325912](#)



**GTX23927 WB Image**

The data was published in the journal Sci Rep in 2017. [PMID: 28325912](#)



**GTX23927 WB Image**

The data was published in the journal Sci Rep in 2017. [PMID: 28325912](#)



For full product information, images and publications, please visit our [website](#).