

Alpha fetoprotein / AFP antibody [AFP-01]

Cat. No. GTX23980

Host	Mouse
Clonality	Monoclonal
Isotype	IgG1
Applications	WB, IP, ELISA
Reactivity	Human

References (1)

Package

100 µg

Applications

Application Note

*Optimal dilutions/concentrations should be determined by the researcher.

Suggested dilution	Recommended dilution
WB	Assay dependent
IP	Assay dependent
ELISA	Assay dependent

Not tested in other applications.

Calculated MW 69 kDa. ([Note](#))

Properties

Form	Liquid
Buffer	PBS
Preservative	15mM Sodium azide
Storage	Store as concentrated solution. Centrifuge briefly prior to opening vial. Store at 4°C. DO NOT FREEZE.
Concentration	Batch dependent (Please refer to the vial label for the specific concentration.)
Immunogen	purified alpha-Fetoprotein
Purification	Purified by precipitation and chromatography
Conjugation	Unconjugated

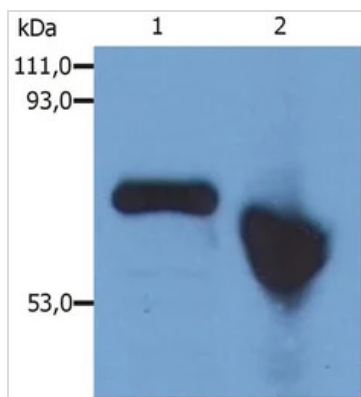
Note

For laboratory research use only. Not for any clinical, therapeutic, or diagnostic use in humans or animals. Not for animal or human consumption.

Purchasers shall not, and agree not to enable third parties to, analyze, copy, reverse engineer or otherwise attempt to determine the structure or sequence of the product.

For full product information, images and publications, please visit our [website](#).

DATA IMAGES



GTX23980 WB Image

WB analysis of HepG2 cell lysates using GTX23980 Alpha fetoprotein / AFP antibody [AFP-01].

Lane 1 : GTX23980 (reducing conditions)

Lane 2 : GTX23980 (non-reducing conditions)



For full product information, images and publications, please visit our [website](#).