

CA19-9 antibody [121SLE]

Cat. No. GTX23982

Host	Mouse
Clonality	Monoclonal
Isotype	IgM
Applications	IHC-P, ELISA
Reactivity	Species independent

References (2)

Package

100 µg

Applications

Application Note

*Optimal dilutions/concentrations should be determined by the researcher.

Suggested dilution	Recommended dilution
IHC-P	Assay dependent
ELISA	Assay dependent

Not tested in other applications.

Product Note This antibody recognizes Sialyl Lewis a containing glycolipids.

Properties

Form	Liquid
Buffer	TBS
Preservative	15mM Sodium azide
Storage	Store as concentrated solution. Centrifuge briefly prior to opening vial. Store at 4°C. DO NOT FREEZE.
Concentration	1 mg/ml (Please refer to the vial label for the specific concentration.)
Immunogen	Immunoprecipitate obtained after immunodiffusion of MAb 19-9 and mucins isolated from an ovarian cyst of a 0Le(a+b-) patient.
Purification	Purified by precipitation and chromatography
Conjugation	Unconjugated

Note

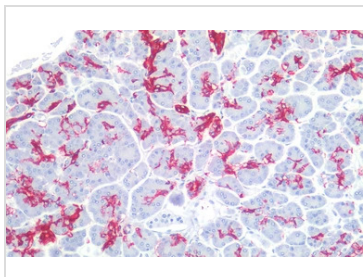
For laboratory research use only. Not for any clinical, therapeutic, or diagnostic use in humans or animals. Not for animal or human consumption.

Purchasers shall not, and agree not to enable third parties to, analyze, copy, reverse engineer or otherwise attempt to determine the structure or sequence of the product.



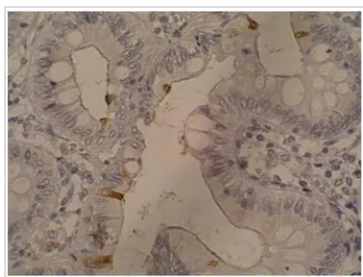
For full product information, images and publications, please visit our [website](#).

DATA IMAGES



GTX23982 IHC-P Image

IHC-P analysis of human pancreas tissue using GTX23982 CA19-9 antibody [121SLE].
Dilution : 10µg/ml



GTX23982 IHC-P Image

IHC-P analysis of colorectal adenocarcinoma tissue using GTX23982 CA19-9 antibody [121SLE].



For full product information, images and publications, please visit our [website](#).