

HLA-E antibody [MEM-E/06]

Cat. No. GTX23984

Host	Mouse
Clonality	Monoclonal
Isotype	IgG1
Applications	IHC-P, FCM, IP
Reactivity	Human, Primate

Package
 100 µg

Applications
Application Note

*Optimal dilutions/concentrations should be determined by the researcher.

Suggested dilution	Recommended dilution
IHC-P	Assay dependent
FCM	Assay dependent
IP	Assay dependent

Not tested in other applications.

Product Note

This antibody reacts with some classical MHC Class I molecules (HLA-A3, -A11, -B7). However, the recent Workshop I Session on the 3rd International Conference on HLA-G (Paris, July 2003) confirmed that the antibody exhibits much broader cross-reactivity classical MHC Class I antigens, namely with HLA-A24, -A32, -B8, -B15, -B27, -B35, -B44, -B54, -C3, -C4, -C5, -C7.

Properties

Form	Liquid
Buffer	PBS
Preservative	15mM Sodium azide
Storage	Store as concentrated solution. Centrifuge briefly prior to opening vial. Store at 4°C. DO NOT FREEZE.
Concentration	1 mg/ml (Please refer to the vial label for the specific concentration.)
Immunogen	Bacterially expressed recombinant HLA-E refolded with beta2-microglobulin and peptide.
Purification	Protein A purified
Conjugation	Unconjugated

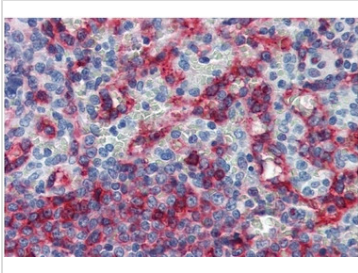

 For full product information, images and publications, please visit our [website](#).

For laboratory research use only. Not for any clinical, therapeutic, or diagnostic use in humans or animals. Not for animal or human consumption.

Note

Purchasers shall not, and agree not to enable third parties to, analyze, copy, reverse engineer or otherwise attempt to determine the structure or sequence of the product.

DATA IMAGES

**GTX23984 IHC-P Image**

IHC-P analysis of human spleen tissue using GTX23984 HLA-E antibody [MEM-E/06].



For full product information, images and publications, please visit our [website](#).