

## STAT1 antibody [SM1]

**Cat. No. GTX23987**

|                     |               |
|---------------------|---------------|
| <b>Host</b>         | Mouse         |
| <b>Clonality</b>    | Monoclonal    |
| <b>Isotype</b>      | IgG2b         |
| <b>Applications</b> | WB, IHC-P, IP |
| <b>Reactivity</b>   | Human, Mouse  |

**Package**  
100 µg

## Applications

**Application Note**

\*Optimal dilutions/concentrations should be determined by the researcher.

| Suggested dilution | Recommended dilution |
|--------------------|----------------------|
| WB                 | Assay dependent      |
| IHC-P              | Assay dependent      |
| IP                 | Assay dependent      |

Not tested in other applications.

**Calculated MW** 87 kDa. ([Note](#))

**Product Note** This antibody recognizes an epitope included within amino acids 721-733 of STAT1.

## Properties

|                      |  |
|----------------------|--|
| <b>Form</b>          | Liquid   |
| <b>Buffer</b>        | PBS  |
| <b>Preservative</b>  | 15mM Sodium azide  |
| <b>Storage</b>       | Store as concentrated solution. Centrifuge briefly prior to opening vial. Store at 4°C. DO NOT FREEZE. |
| <b>Concentration</b> | 1 mg/ml (Please refer to the vial label for the specific concentration.)                               |
| <b>Immunogen</b>     | STAT1 peptide sequence 721-733 (DNLLPMSPEEFDE).  |
| <b>Purification</b>  | Protein A purified   |
| <b>Conjugation</b>   | Unconjugated   |

**Note**

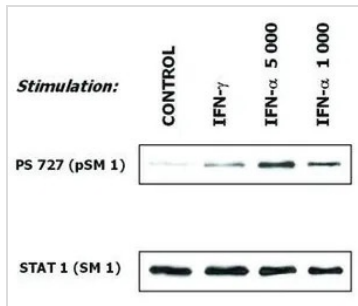
For laboratory research use only. Not for any clinical, therapeutic, or diagnostic use in humans or animals. Not for animal or human consumption.

Purchasers shall not, and agree not to enable third parties to, analyze, copy, reverse engineer or otherwise attempt to determine the structure or sequence of the product.



For full product information, images and publications, please visit our [website](#).

## DATA IMAGES

**GTX23987 WB Image**

WB analysis of human malignant melanoma cells (short-term culture derived from a patient) treated with IFN-gamma (10 ng/ml) and IFN-alpha (1000 IU/ml and 5000 IU/ml) using GTX23987 STAT1 antibody [SM1].

Upper Lane : GTX23991 STAT1 (phospho Ser727) antibody [PSM1]

Lower Lane : GTX23987 STAT1 antibody [SM1]



For full product information, images and publications, please visit our [website](#).