

STAT1 (phospho Ser727) antibody [PSM1]

Cat. No. GTX23991

Host	Mouse
Clonality	Monoclonal
Isotype	IgG1
Applications	WB, IP
Reactivity	Human

Package
100 µg

Applications

Application Note

*Optimal dilutions/concentrations should be determined by the researcher.

Suggested dilution	Recommended dilution
WB	Assay dependent
IP	Assay dependent

Not tested in other applications.

Calculated MW 87 kDa. ([Note](#))

Properties

Form	Liquid
Buffer	PBS
Preservative	15mM Sodium azide
Storage	Store as concentrated solution. Centrifuge briefly prior to opening vial. Store at 4°C. DO NOT FREEZE.
Concentration	1 mg/ml (Please refer to the vial label for the specific concentration.)
Immunogen	STAT1 peptide sequence 721-733 (Ser727 phosphorylated).
Purification	Protein A purified
Conjugation	Unconjugated

Note

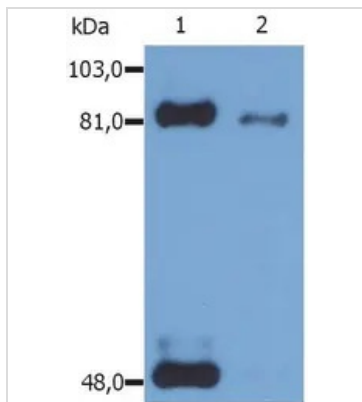
For laboratory research use only. Not for any clinical, therapeutic, or diagnostic use in humans or animals. Not for animal or human consumption.

Purchasers shall not, and agree not to enable third parties to, analyze, copy, reverse engineer or otherwise attempt to determine the structure or sequence of the product.



For full product information, images and publications, please visit our [website](#).

DATA IMAGES



GTx23991 WB Image

WB analysis of IFN-gamma treated HeLa cell lysate using GTx23991 STAT1 (phospho Ser727) antibody [PSM1].

Lane 1 : Immunoprecipitate by another anti-STAT1 antibody

Lane 2 : Original whole cell lysate



For full product information, images and publications, please visit our [website](https://www.genetex.com).