

E2F1 antibody [KH95]

Cat. No. GTX24070

Host	Mouse
Clonality	Monoclonal
Isotype	IgG2a
Applications	WB, IHC-P, IP, ChIP assay
Reactivity	Human

References (2)

Package

500 µl

Applications

Application Note

*Optimal dilutions/concentrations should be determined by the researcher.

Suggested dilution	Recommended dilution
WB	Assay dependent
IHC-P	1:25-1:50
IP	Assay dependent
ChIP assay	Assay dependent

Note : Recommendations for antigen retrieval : EDTA buffer pH 8.0

Not tested in other applications.

Calculated MW 47 kDa. ([Note](#))

Properties

Form	Liquid
Buffer	Ascites
Preservative	0.09% Sodium azide
Storage	Store as concentrated solution. Centrifuge briefly prior to opening vial. Store at 4°C.
Immunogen	BALB/C mice were immunized with a recombinant human E2F-1 protein.
Purification	Unpurified
Conjugation	Unconjugated

Note

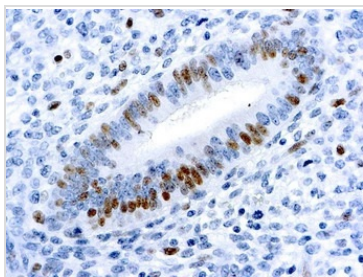
For laboratory research use only. Not for any clinical, therapeutic, or diagnostic use in humans or animals. Not for animal or human consumption.

Purchasers shall not, and agree not to enable third parties to, analyze, copy, reverse engineer or otherwise attempt to determine the structure or sequence of the product.



For full product information, images and publications, please visit our [website](#).

DATA IMAGES



GTX24070 IHC-P Image

IHC-P analysis of human breast carcinoma tissue using GTX24070 E2F1 antibody [KH95].



For full product information, images and publications, please visit our [website](#).