

USP7 antibody

Cat. No. GTX24080

Host	Rabbit
Clonality	Polyclonal
Isotype	IgG
Applications	WB, ELISA
Reactivity	Human, Mouse

Package
50 µg

Applications

Application Note

*Optimal dilutions/concentrations should be determined by the researcher.

Suggested dilution	Recommended dilution
WB	1:500-1:2000
ELISA	1:15000-1:60000

Not tested in other applications.

Calculated MW 128 kDa. ([Note](#))

Properties

Form	Liquid
Buffer	20mM Potassium Phosphate, 150mM NaCl
Preservative	0.01% Sodium azide
Storage	Store as concentrated solution. Centrifuge briefly prior to opening vial. For short-term storage (1-2 weeks), store at 4°C. For long-term storage, aliquot and store at -20°C or below. Avoid multiple freeze-thaw cycles.
Concentration	1.1 mg/ml (Please refer to the vial label for the specific concentration.)
Immunogen	Synthetic peptide corresponding to amino acids near the amino terminus of human HAUSP protein.
Purification	Purified by antigen-affinity chromatography. From serum
Conjugation	Unconjugated

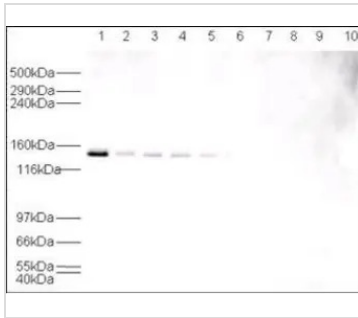
Note

For laboratory research use only. Not for any clinical, therapeutic, or diagnostic use in humans or animals. Not for animal or human consumption.

Purchasers shall not, and agree not to enable third parties to, analyze, copy, reverse engineer or otherwise attempt to determine the structure or sequence of the product.



For full product information, images and publications, please visit our [website](#).

DATA IMAGES

GTX24080 WB Image

WB analysis of various samples using GTX24080 USP7 antibody prior incubated with (Lane 6-10) or without (Lane 1-5) blocking peptide. Lane 1 and 6 : HeLa nuclear extracts

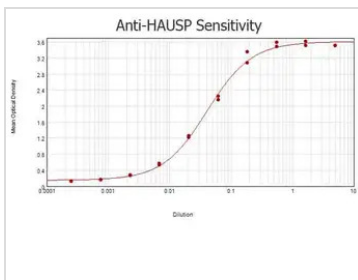
Lane 2 and 7 : HeLa whole cell lysates

Lane 3 and 8 : A431 whole cell lysates

Lane 4 and 9 : MCF-7 whole cell lysates

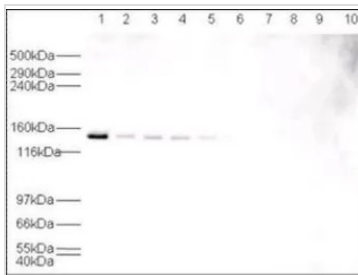
Lane 5 and 10 : NIH-3T3 whole cell lysates

Dilution : 1:500


GTX24080 ELISA Image

ELISA analysis of BSA-conjugated immunizing peptide using serially diluted GTX24080 USP7 antibody.

Coating : 0.1 µg


GTX24080 WB Image

Western blot using GeneTex affinity purified anti-HAUSP antibody (GTX24080) shows detection of HAUSP in various cell lysates at 130 kDa (lane 1 - HeLa nuclear extract, lane 2 - HeLa, Lane 3 - A431, Lane 4 - MCF7, Lane 5 - 3T3). The antibody is blocked by pre-incubation with the immunizing peptide (lanes 6 - 10) using the same lysates. A 1:500 dilution of the primary antibody was used for detection followed by a 1:5,000 dilution of HRP Gt-a-Rabbit IgG. Exposure time was 30 s.



For full product information, images and publications, please visit our [website](https://www.genetex.com).