

KSHV antibody [LN35]

Cat. No. GTX24103

Host	Rat
Clonality	Monoclonal
Isotype	IgG2c
Applications	ICC/IF
Reactivity	Kaposi's sarcoma-associated herpesvirus

Package
500 µl

Applications

Application Note

*Optimal dilutions/concentrations should be determined by the researcher.

Suggested dilution	Recommended dilution
ICC/IF	1:25-1:50

Not tested in other applications.

Properties

Form	Liquid
Buffer	Tissue culture supernatant
Preservative	0.09% Sodium azide
Storage	Store as concentrated solution. Centrifuge briefly prior to opening vial. Store at 4°C.
Immunogen	Recombinant protein corresponding to the latent nuclear antigen-1 molecule of HHV8.
Purification	Unpurified
Conjugation	Unconjugated

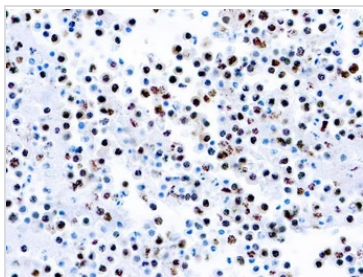
Note

For laboratory research use only. Not for any clinical, therapeutic, or diagnostic use in humans or animals. Not for animal or human consumption.

Purchasers shall not, and agree not to enable third parties to, analyze, copy, reverse engineer or otherwise attempt to determine the structure or sequence of the product.



For full product information, images and publications, please visit our [website](#).

DATA IMAGES

GTX24103 ICC/IF Image

ICC/IF analysis of cultured cells infected with KSHV using GTX24103 KSHV antibody [LN35].



For full product information, images and publications, please visit our [website](#).