

Park7 / DJ-1 antibody

Cat. No. GTX24150

Host	Goat
Clonality	Polyclonal
Isotype	IgG
Applications	WB, ICC/IF, IHC-P
Reactivity	Human, Mouse, Rat

Package
50 µg

Applications

Application Note

*Optimal dilutions/concentrations should be determined by the researcher.

Suggested dilution	Recommended dilution
WB	0.05-0.1 µg/ml
ICC/IF	5 µg/ml
IHC-P	Assay dependent

Note : Strong expression of the protein seen around the nucleus. Dividing cells appear to show enhanced expression.

Not tested in other applications.

Calculated MW 20 kDa. ([Note](#))

Properties

Form	Liquid
Buffer	TBS, 0.5% BSA
Preservative	0.02% Sodium azide
Storage	Store as concentrated solution. Centrifuge briefly prior to opening vial. For short-term storage (1-2 weeks), store at 4°C. For long-term storage, aliquot and store at -20°C or below. Avoid multiple freeze-thaw cycles.
Concentration	0.50 mg/ml (Please refer to the vial label for the specific concentration.)
Immunogen	Peptide with sequence C-AAQVKAPLVKLD, from the C Terminus of the protein sequence according to NP_009193.2.
Purification	Purified by ammonium sulphate precipitation followed by antigen affinity chromatography
Conjugation	Unconjugated

Note

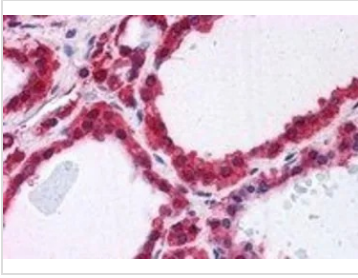
For laboratory research use only. Not for any clinical, therapeutic, or diagnostic use in humans or animals. Not for animal or human consumption.

Purchasers shall not, and agree not to enable third parties to, analyze, copy, reverse engineer or otherwise attempt to determine the structure or sequence of the product.



For full product information, images and publications, please visit our [website](#).

DATA IMAGES

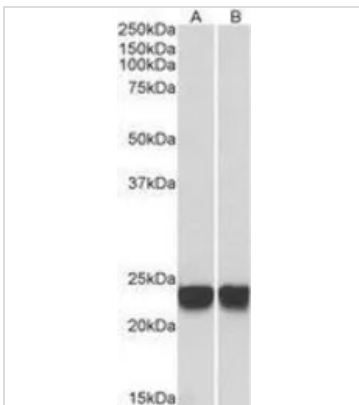


GTX24150 IHC-P Image

IHC-P analysis of human thyroid using GTX24150 Park7 / DJ-1 antibody.

Antigen retrieval : citrate buffer pH 6

Dilution : 3.75µg/ml

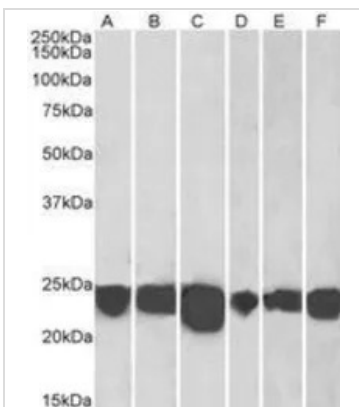


GTX24150 WB Image

WB analysis of HeLa (A) and Jurkat (B) lysates using GTX24150 Park7 / DJ-1 antibody.

Dilution : 0.001µg/ml

Loading : 35µg protein in RIPA buffer

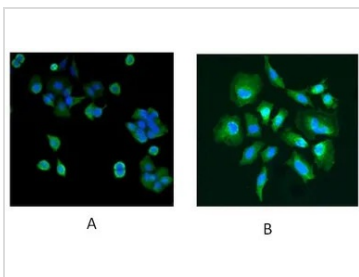


GTX24150 WB Image

WB analysis of human cerebellum (A), human frontal cortex (B), human hippocampus (C) mouse Fetal brain (D), mouse brain (E) and rat brain (F) lysates using GTX24150 Park7 / DJ-1 antibody.

Dilution : 0.001µg/ml

Loading : 35µg protein in RIPA buffer



GTX24150 ICC/IF Image

ICC/IF analysis of MCF7 (A) and HeLa (B) cells using GTX24150 Park7 / DJ-1 antibody.

Dilution : 5µg/ml



For full product information, images and publications, please visit our [website](https://www.genetex.com).