

## CBX4 antibody

Cat. No. GTX24189

Host	Rabbit
Clonality	Polyclonal
Isotype	IgG
Applications	WB, ICC/IF, IP, ELISA
Reactivity	Human

Package  
100 µg

## Applications

## Application Note

\*Optimal dilutions/concentrations should be determined by the researcher.

Suggested dilution	Recommended dilution
WB	1:1000-1:4000
ICC/IF	1:100-1:400
IP	1:100
ELISA	1:10000-1:40000

Not tested in other applications.

**Calculated MW** 61 kDa. ( [Note](#) )

## Properties

Form	Liquid
Buffer	20mM Potassium Phosphate, 150mM NaCl
Preservative	0.01% Sodium azide
Storage	Store as concentrated solution. Centrifuge briefly prior to opening vial. For short-term storage (1-2 weeks), store at 4°C. For long-term storage, aliquot and store at -20°C or below. Avoid multiple freeze-thaw cycles.
Concentration	1.36 mg/ml (Please refer to the vial label for the specific concentration.)
Immunogen	Synthetic peptide corresponding to an internal region near aa 90-115 of Human PC2 protein.
Purification	Purified by antigen-affinity chromatography. This is an affinity purified antibody produced by immunoaffinity chromatography using the immunizing peptide after immobilization to a solid phase.
Conjugation	Unconjugated

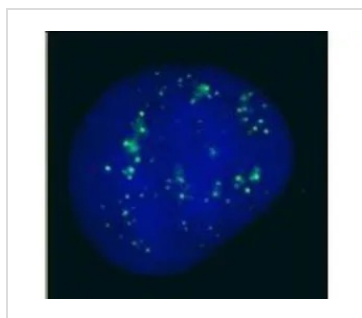


For full product information, images and publications, please visit our [website](#).

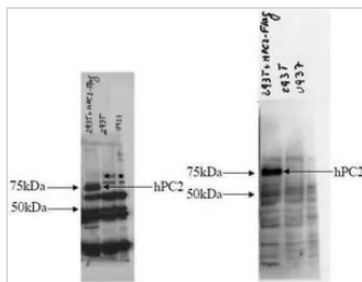
For laboratory research use only. Not for any clinical, therapeutic, or diagnostic use in humans or animals. Not for animal or human consumption.

**Note**

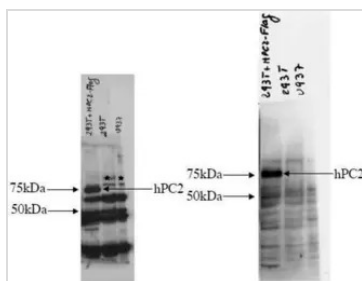
Purchasers shall not, and agree not to enable third parties to, analyze, copy, reverse engineer or otherwise attempt to determine the structure or sequence of the product.

**DATA IMAGES**

**GTx24189 ICC/IF Image**

GeneTex anti-hPC2 antibody (GTx24189) was used for immunofluorescent imaging of human cells (U2OS). The image reveals the expected discrete nuclear structure that is termed the PcG body corresponding to the known localization of PC2. IF was performed after fixation in PBS with 4% PF for 5 min, permeabilization with 0.5% Polyethylene glycol tert-octylphenyl ether-PBS for 5 min, and blocking with 5% milk / 0.2% Tween for 1 h. Primary antibody used at 1:200 in 5% milk / 0.2% Tween for 1 h, secondary antibody for 30 min. All blocking and incubation steps carried out at 37° C. Nuclei were counterstained with Hoechst stain (blue).


**GTx24189 WB Image**

Western blotting. Analysis shows the detection of human PC2 in probed lysates using GeneTex Affinity Purified anti-hPC2 antibody (GTx24189). The panel on the left shows the blot probed with anti-hPC2. The panel on the right is the same blot reprobed with anti-FLAG antibody to confirm the presence of FLAG tagged recombinant PC2 in the lysate. In the left panel the band labeled as hPC2 is FLAG-tagged transfected hPC2 in 293T cells. The bands labeled with stars are likely endogenous hPC2. In the right panel the band labeled hPC2 is FLAG-tagged transfected hPC2 in 293T cells.


**GTx24189 WB Image**

WB analysis of flag-tagged human CBX4 protein using GTx24189 CBX4 antibody. Panel on the left shows the blot probed with GTx24189 CBX4 antibody. The panel on the right is the same blot reprobed with anti-FLAG antibody to confirm the presence of FLAG tagged recombinant CBX4 in the lysate.



For full product information, images and publications, please visit our [website](https://www.genetex.com).