

# PNK antibody

**Cat. No. GTX24191**

<b>Host</b>	Rabbit
<b>Clonality</b>	Polyclonal
<b>Isotype</b>	IgG
<b>Application</b>	WB, ELISA
<b>Reactivity</b>	Human, Chimpanzee

**Package**  
100 µg

## APPLICATION

### Application Note

\*Optimal dilutions/concentrations should be determined by the researcher.

Suggested dilution	Recommended dilution
WB	1:300-1:500
ELISA	1:3000-1:12000

Not tested in other applications.

**Calculated MW** 57 kDa. ( [Note](#) )

## PROPERTIES

<b>Form</b>	Liquid
<b>Buffer</b>	20mM Potassium Phosphate, 150mM NaCl
<b>Preservative</b>	0.01% Sodium azide
<b>Storage</b>	Store as concentrated solution. Centrifuge briefly prior to opening vial. For short-term storage (1-2 weeks), store at 4°C. For long-term storage, aliquot and store at -20°C or below. Avoid multiple freeze-thaw cycles.
<b>Concentration</b>	1.46 mg/ml (Please refer to the vial label for the specific concentration.)
<b>Immunogen</b>	Synthetic peptide corresponding to an internal region of human PNK protein.
<b>Purification</b>	Purified by antigen-affinity chromatography. From serum
<b>Conjugation</b>	Unconjugated

### Note

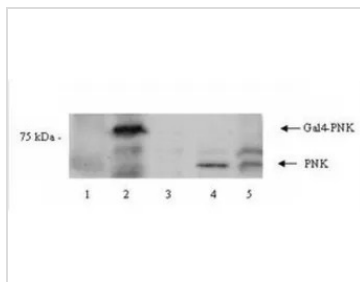
For laboratory research use only. Not for any clinical, therapeutic, or diagnostic use in humans or animals. Not for animal or human consumption.

Purchasers shall not, and agree not to enable third parties to, analyze, copy, reverse engineer or otherwise attempt to determine the structure or sequence of the product.



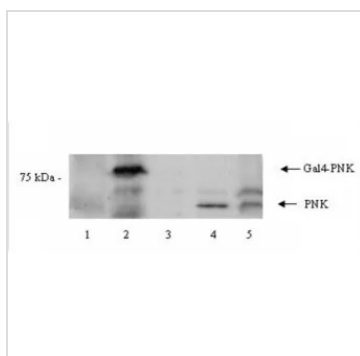
For full product information, images and publications, please visit our [website](#).

## DATA IMAGES



### GTx24191 WB Image

Western blot using GeneTex's Affinity Purified anti-PNK antibody shows detection of a 57 kDa band corresponding to human PNK in a Y190 yeast cell lysate (lane 1), Y190 yeast cell lysate + human PNK (Gal DNA BP) (lane 2), EM9 XH Chinese hamster ovary cell lysate (lane 3), EM9 XH Chinese hamster ovary cell lysate + human PNK (lane 4) and a HeLa cell lysate (lane 5). Approximately 10 µg of lysate was run on SDS-PAGE and transferred onto nitrocellulose followed by reaction with a 1:1000 dilution of anti-PNK antibody incubated for 1 hr in TBST at room temperature. Signal was detected using standard techniques.



### GTx24191 WB Image

WB analysis of various samples using GTx24191 PNK antibody.

Lane 1 : Y190 yeast whole cell lysate

Lane 2 : PNK-overexpressed Y190 yeast whole cell lysate

Lane 3 : EM9 XH whole cell lysate

Lane 4 : PNK-overexpression EM9 XH whole cell lysate

Lane 5 : HeLa whole cell lysate

Loading : 10 µg

Dilution : 1:1000



For full product information, images and publications, please visit our [website](https://www.genetex.com).