

PNK antibody

Cat. No. GTX24191

Host	Rabbit
Clonality	Polyclonal
Isotype	IgG
Applications	WB, ELISA
Reactivity	Human, Chimpanzee

Package
100 µg

Applications

Application Note

*Optimal dilutions/concentrations should be determined by the researcher.

Suggested dilution	Recommended dilution
WB	1:300-1:500
ELISA	1:3000-1:12000

Not tested in other applications.

Calculated MW 57 kDa. ([Note](#))

Properties

Form	Liquid
Buffer	20mM Potassium Phosphate, 150mM NaCl
Preservative	0.01% Sodium azide
Storage	Store as concentrated solution. Centrifuge briefly prior to opening vial. For short-term storage (1-2 weeks), store at 4°C. For long-term storage, aliquot and store at -20°C or below. Avoid multiple freeze-thaw cycles.
Concentration	1.46 mg/ml (Please refer to the vial label for the specific concentration.)
Immunogen	Synthetic peptide corresponding to an internal region of human PNK protein.
Purification	Purified by antigen-affinity chromatography. From serum
Conjugation	Unconjugated

Note

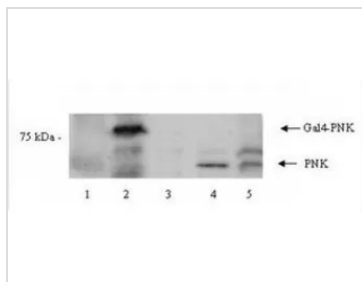
For laboratory research use only. Not for any clinical, therapeutic, or diagnostic use in humans or animals. Not for animal or human consumption.

Purchasers shall not, and agree not to enable third parties to, analyze, copy, reverse engineer or otherwise attempt to determine the structure or sequence of the product.

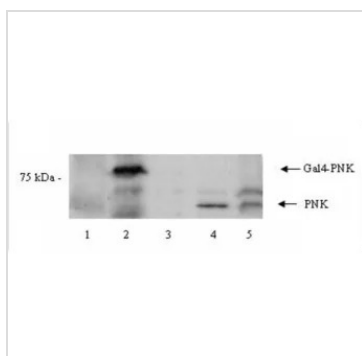


For full product information, images and publications, please visit our [website](#).

DATA IMAGES

**GTX24191 WB Image**

Western blot using GeneTex's Affinity Purified anti-PNK antibody shows detection of a 57 kDa band corresponding to human PNK in a Y190 yeast cell lysate (lane 1), Y190 yeast cell lysate + human PNK (Gal DNA BP) (lane 2), EM9 XH Chinese hamster ovary cell lysate (lane 3), EM9 XH Chinese hamster ovary cell lysate + human PNK (lane 4) and a HeLa cell lysate (lane 5). Approximately 10 μ g of lysate was run on SDS-PAGE and transferred onto nitrocellulose followed by reaction with a 1:1000 dilution of anti-PNK antibody incubated for 1 hr in TBST at room temperature. Signal was detected using standard techniques.

**GTX24191 WB Image**

WB analysis of various samples using GTX24191 PNK antibody.

Lane 1 : Y190 yeast whole cell lysate

Lane 2 : PNK-overexpressed Y190 yeast whole cell lysate

Lane 3 : EM9 XH whole cell lysate

Lane 4 : PNK-overexpression EM9 XH whole cell lysate

Lane 5 : HeLa whole cell lysate

Loading : 10 μ g

Dilution : 1:1000



For full product information, images and publications, please visit our [website](#).