

## SFRP1 antibody

Cat. No. GTX24193

<b>Host</b>	Rabbit
<b>Clonality</b>	Polyclonal
<b>Isotype</b>	IgG
<b>Applications</b>	WB, ICC/IF, IHC-P, ELISA, IHC
<b>Reactivity</b>	Human

References ( 2 )

Package

50 µg

## Applications

## Application Note

\*Optimal dilutions/concentrations should be determined by the researcher.

Suggested dilution	Recommended dilution
WB	1:200-1:2000
ICC/IF	5 µg/mL
IHC-P	1:800
ELISA	1:5000-1:15000
IHC	1:800

Not tested in other applications.

Calculated MW 35 kDa. ( [Note](#) )

## Properties

<b>Form</b>	Liquid
<b>Buffer</b>	20mM Potassium Phosphate, 150mM NaCl
<b>Preservative</b>	0.01% Sodium azide
<b>Storage</b>	Store as concentrated solution. Centrifuge briefly prior to opening vial. For short-term storage (1-2 weeks), store at 4°C. For long-term storage, aliquot and store at -20°C or below. Avoid multiple freeze-thaw cycles.
<b>Concentration</b>	1 mg/ml (Please refer to the vial label for the specific concentration.)
<b>Immunogen</b>	Synthetic peptide corresponding to a 12 aa region of human Sfrp1 protein.
<b>Purification</b>	Purified by antigen-affinity chromatography. From serum
<b>Conjugation</b>	Unconjugated



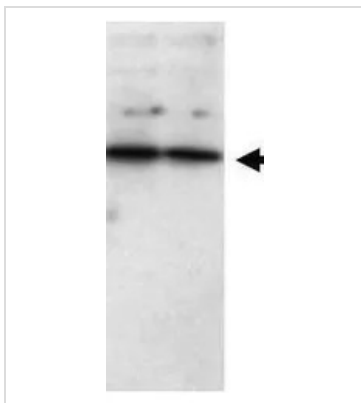
For full product information, images and publications, please visit our [website](#).

For laboratory research use only. Not for any clinical, therapeutic, or diagnostic use in humans or animals. Not for animal or human consumption.

#### Note

Purchasers shall not, and agree not to enable third parties to, analyze, copy, reverse engineer or otherwise attempt to determine the structure or sequence of the product.

#### DATA IMAGES



#### GTX24193 WB Image

Western blot using GeneTex Affinity Purified anti-SFRP1 antibody (GTX24193) shows detection of a band ~37 kDa (arrowhead) corresponding to SFRP1 in lysates from human cultured airway epithelial cells. Lysates were run on a SDS-PAGE and transferred onto nitrocellulose followed by reaction with a 1:230 dilution of anti-SFRP1 antibody overnight at 4°C. Signal was detected using standard techniques.



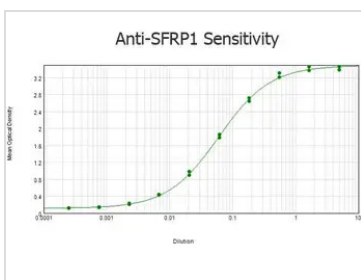
#### GTX24193 IHC Image

GeneTex Affinity Purified anti-Human SFRP1 antibody (GTX24193) was used at a 1:800 dilution for 20 min to detect SFRP in human dermal hypertrophic scar tissue. Tissue was formalin-fixed followed by heat mediated antigen retrieval prior to blocking. HRP Gt-a-Rabbit IgG (GTX26721) is suitable for secondary antibody detection.



#### GTX24193 IHC-P Image

IHC-P analysis of human dermal hypertrophic scar tissue using GTX24193 SFRP1 antibody.  
Antigen retrieval : Heat mediated buffer  
Dilution : 1:800



#### GTX24193 ELISA Image

ELISA analysis of BSA-conjugated immunizing peptide using serially diluted GTX24193 SFRP1 antibody.  
Coating : 0.1 µg



For full product information, images and publications, please visit our [website](#).