

PAG antibody [PAG-C1]

Cat. No. GTX24206

Host	Mouse
Clonality	Monoclonal
Isotype	IgG2b
Applications	WB, IHC-P, IP
Reactivity	Human, Mouse, Rat, Bovine

Package
100 µg

Applications

Application Note

*Optimal dilutions/concentrations should be determined by the researcher.

Suggested dilution	Recommended dilution
WB	Assay dependent
IHC-P	Assay dependent
IP	Assay dependent

Not tested in other applications.

Calculated MW 47 kDa. ([Note](#))

Product Note This antibody recognizes an epitope located in the C-terminal domain of Csk-binding protein (Cbp / PAG).

Properties

Form	Liquid
Buffer	PBS
Preservative	15mM Sodium azide
Storage	Store as concentrated solution. Centrifuge briefly prior to opening vial. Store at 4°C. DO NOT FREEZE.
Concentration	1 mg/ml (Please refer to the vial label for the specific concentration.)
Immunogen	C-terminal peptide (last 15 amino acids) of human Csk binding protein coupled to KLH.
Purification	Protein A purified
Conjugation	Unconjugated

Note

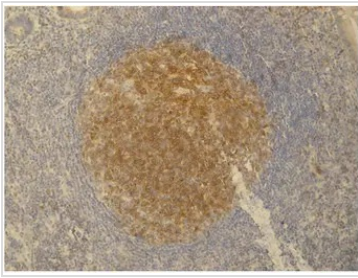
For laboratory research use only. Not for any clinical, therapeutic, or diagnostic use in humans or animals. Not for animal or human consumption.

Purchasers shall not, and agree not to enable third parties to, analyze, copy, reverse engineer or otherwise attempt to determine the structure or sequence of the product.



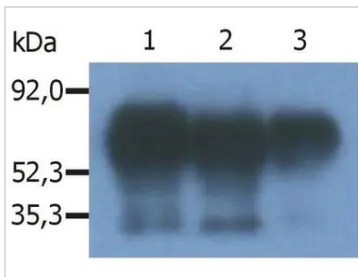
For full product information, images and publications, please visit our [website](#).

DATA IMAGES



GTx24206 IHC-P Image

IHC-P analysis of germinal center of lymphatic follicle and in dispersed T cells in appendix tissue using GTx24206 PAG antibody [PAG-C1].



GTx24206 IP Image

IP analysis of Raji cell lysate using GTx24206 PAG antibody [PAG-C1]. The signal was detected by GTx29527 PAG antibody [MEM-255] in WB assay.

Lane 1,2 : Immunoprecipitate by GTx24206

Lane 3 : Immunoprecipitate by GTx14989



For full product information, images and publications, please visit our [website](https://www.genetex.com).