

SA1 antibody

Cat. No. GTX24455

Host	Goat
Clonality	Polyclonal
Isotype	IgG
Application	WB, ICC/IF, PLA
Reactivity	Human, Xenopus

Package

50 µg

APPLICATION

Application Note

*Optimal dilutions/concentrations should be determined by the researcher.

Suggested dilution	Recommended dilution
WB	1:1000 - 1:10000
ICC/IF	1:500 - 1:2000
PLA	1:1000 - 1:10000

Not tested in other applications.

Calculated MW 144 kDa. ([Note](#))

PROPERTIES

Form	Liquid
Buffer	Tris-Citrate/Phosphate
Preservative	0.09% Sodium azide
Storage	Store as concentrated solution. Centrifuge briefly prior to opening vial. Store at 4°C. DO NOT FREEZE.
Concentration	1 mg/ml (Please refer to the vial label for the specific concentration.)
Immunogen	A 36 amino acid synthetic peptide, which represented a portion of human Stromal Antigen 1 encoded in part by exons 5 and 6 (LocusLink ID 10274).
Purification	Purified by antigen-affinity chromatography
Conjugation	Unconjugated

Note

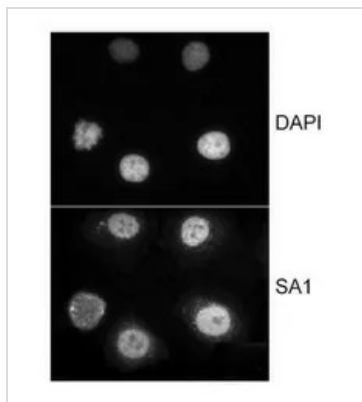
For laboratory research use only. Not for any clinical, therapeutic, or diagnostic use in humans or animals. Not for animal or human consumption.

Purchasers shall not, and agree not to enable third parties to, analyze, copy, reverse engineer or otherwise attempt to determine the structure or sequence of the product.



For full product information, images and publications, please visit our [website](#).

DATA IMAGES

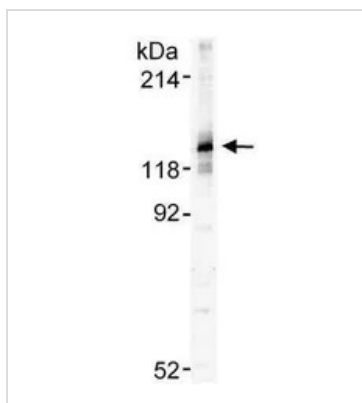


GTx24455 ICC/IF Image

ICC/IF analysis of HeLa cells using GTX24455 SA1 antibody.

Dilution : 1 µg/ml

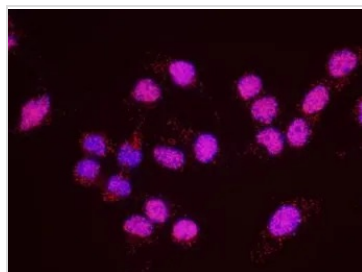
Permibilization : 0.5% Triton-X100



GTx24455 WB Image

WB analysis of HeLa nuclear extract using GTX24455 SA1 antibody.

Dilution : 0.5 µg/ml



GTx24455 PLA Image

PLA analysis of HeLa cells using GTX24455 SA1 antibody and anti-human SMC1 antibody.

Red : positive signal

Blue : DAPI



For full product information, images and publications, please visit our [website](https://www.genetex.com).