

## MCM3 antibody

**Cat. No. GTX24460**

<b>Host</b>	Rabbit
<b>Clonality</b>	Polyclonal
<b>Isotype</b>	IgG
<b>Applications</b>	WB, IHC-P, IP, PLA
<b>Reactivity</b>	Human, Xenopus

**Package**  
50 µl

## Applications

**Application Note**

\*Optimal dilutions/concentrations should be determined by the researcher.

Suggested dilution	Recommended dilution
WB	1:2000 - 1:10000
IHC-P	1:1000 - 1:5000
IP	2 - 5 µg/mg lysate
PLA	1:2000 - 1:40000

Not tested in other applications.

**Calculated MW** 91 kDa. ([Note](#))

## Properties

<b>Form</b>	Liquid
<b>Buffer</b>	Tris-Citrate/Phosphate
<b>Preservative</b>	0.09% Sodium azide
<b>Storage</b>	Store as concentrated solution. Centrifuge briefly prior to opening vial. Store at 4°C. DO NOT FREEZE.
<b>Concentration</b>	1 mg/ml (Please refer to the vial label for the specific concentration.)
<b>Immunogen</b>	A 38-amino acid synthetic peptide, which represented a portion of human Minichromosome Maintenance Deficient 3 encoded in part by exons 10 and 11 (LocusLink ID 4172).
<b>Purification</b>	Purified by antigen-affinity chromatography
<b>Conjugation</b>	Unconjugated

**Note**

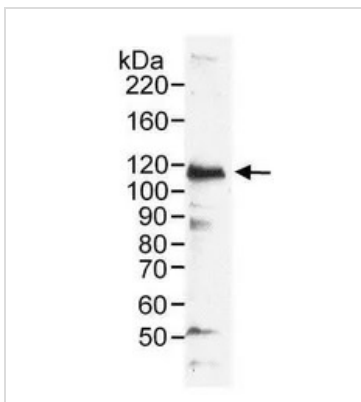
For laboratory research use only. Not for any clinical, therapeutic, or diagnostic use in humans or animals. Not for animal or human consumption.

Purchasers shall not, and agree not to enable third parties to, analyze, copy, reverse engineer or otherwise attempt to determine the structure or sequence of the product.



For full product information, images and publications, please visit our [website](#).

DATA IMAGES

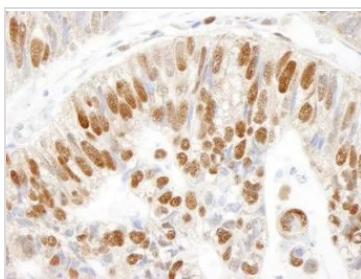


**GTx24460 WB Image**

WB analysis of HeLa cell lysate in RIPA buffer using GTx24460 MCM3 antibody.

Loading : 50µg

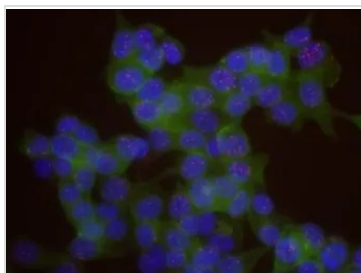
Dilution : 0.2 µg/ml



**GTx24460 IHC-P Image**

IHC-P analysis of human colon carcinoma tissue using GTx24460 MCM3 antibody.

Dilution : 1 µg/ml



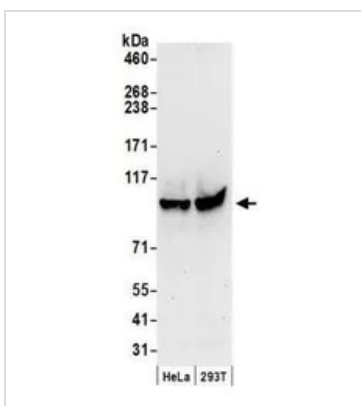
**GTx24460 PLA Image**

PLA analysis of MCF-7 cells using GTx24460 MCM3 antibody and anti-human POLR2A antibody.

Green : Actin

Red : positive signal

Blue : DAPI



**GTx24460 WB Image**

WB analysis of HeLa and 293T cell lysate prepared by NETN lysis buffer using GTx24460 MCM3 antibody.

Dilution : 0.1 µg/ml

Loading : 50µg



For full product information, images and publications, please visit our [website](#).