

## MCM2 antibody

Cat. No. GTX24461

Host	Rabbit
Clonality	Polyclonal
Isotype	IgG
Applications	WB, IHC-P, IP, PLA
Reactivity	Human, Xenopus

Package  
50 µg

## Applications

## Application Note

\*Optimal dilutions/concentrations should be determined by the researcher.

Suggested dilution	Recommended dilution
WB	1:1000 - 1:10000
IHC-P	1:2000 - 1:10000
IP	2 - 5 µg/mg lysate
PLA	1:1000 - 1:10000

Not tested in other applications.

Calculated MW 102 kDa. ([Note](#))

## Properties

Form	Liquid
Buffer	Tris-Citrate/Phosphate
Preservative	0.09% Sodium azide
Storage	Store as concentrated solution. Centrifuge briefly prior to opening vial. Store at 4°C. DO NOT FREEZE.
Concentration	1 mg/ml (Please refer to the vial label for the specific concentration.)
Immunogen	A 37-amino acid synthetic peptide, which represented a portion of human Minichromosome Maintenance Deficient 2 encoded within exon 2 (LocusLink ID 4171).
Purification	Purified by antigen-affinity chromatography
Conjugation	Unconjugated

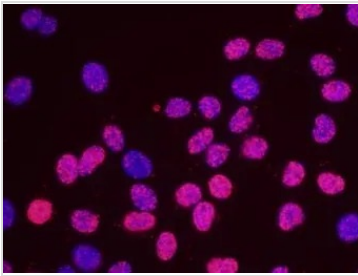
## Note

For laboratory research use only. Not for any clinical, therapeutic, or diagnostic use in humans or animals. Not for animal or human consumption.

Purchasers shall not, and agree not to enable third parties to, analyze, copy, reverse engineer or otherwise attempt to determine the structure or sequence of the product.

For full product information, images and publications, please visit our [website](#).

## DATA IMAGES

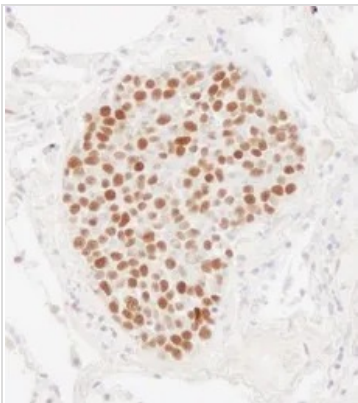


### GTX24461 PLA Image

PLA analysis of HeLa cells using GTX24461 MCM2 antibody and anti-human MCM6 antibody.

Red : positive signal

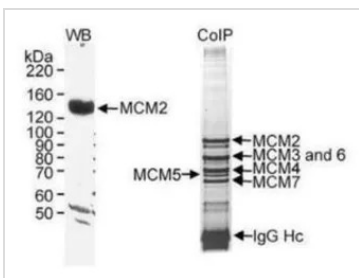
Blue : DAPI



### GTX24461 IHC-P Image

IHC-P analysis of human small cell lung cancer tissue using GTX24461 MCM2 antibody.

Dilution : 1 µg/ml



### GTX24461 IP Image

Left : WB analysis of HeLa cell lysate (in RIPA buffer) using GTX24461 MCM2 antibody.

Loading : 50µg

Right : IP analysis of HeLa cell lysate using GTX24461 MCM2 antibody.

IP reaction : 20µg antibody/7mg lysate

Dilution : 0.2 mg/ml



For full product information, images and publications, please visit our [website](https://www.genetex.com).