

## Survivin antibody [60.11]

Cat. No. GTX24470

Host	Mouse
Clonality	Monoclonal
Isotype	IgG2a
Application	WB, ICC/IF, IHC-P, IHC-Fr, FACS, ELISA
Reactivity	Human, Mouse, Rat

Package  
100 µl

## APPLICATION

## Application Note

\*Optimal dilutions/concentrations should be determined by the researcher.

Suggested dilution	Recommended dilution
WB	1:1000
ICC/IF	1:50 - 1:200
IHC-P	1:50 - 1:200
IHC-Fr	Assay dependent
FACS	1 µg/ml
ELISA	Assay dependent

Not tested in other applications.

**Calculated MW** 16 kDa. ( [Note](#) )**Product Note** This antibody is specific for the cytoplasmic form of Survivin.

## PROPERTIES

Form	Liquid
Buffer	PBS
Preservative	0.1% Sodium azide
Storage	Store as concentrated solution. Centrifuge briefly prior to opening vial. For short-term storage (1-2 weeks), store at 4°C. For long-term storage, aliquot and store at -20°C or below. Avoid multiple freeze-thaw cycles.
Concentration	0.9 mg/ml (Please refer to the vial label for the specific concentration.)
Immunogen	Full length recombinant human Survivin [UniProt# O15392]
Purification	Protein G purified
Conjugation	Unconjugated



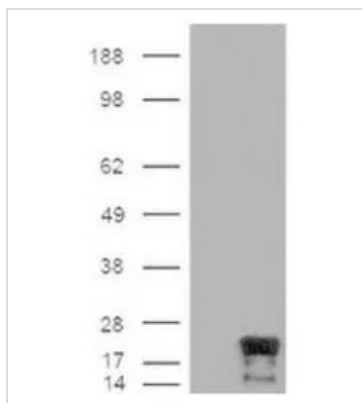
For full product information, images and publications, please visit our [website](#).

For laboratory research use only. Not for any clinical, therapeutic, or diagnostic use in humans or animals. Not for animal or human consumption.

## Note

Purchasers shall not, and agree not to enable third parties to, analyze, copy, reverse engineer or otherwise attempt to determine the structure or sequence of the product.

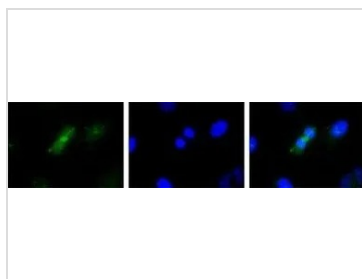
## DATA IMAGES



### GTX24470 WB Image

WB analysis of mock or overexpressing Survivin cell lysate using GTX24470 Survivin antibody [60.11].

Loading : 5µg

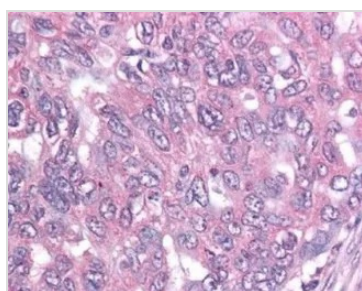


### GTX24470 ICC/IF Image

ICC/IF analysis of HeLa cells using GTX24470 Survivin antibody [60.11].

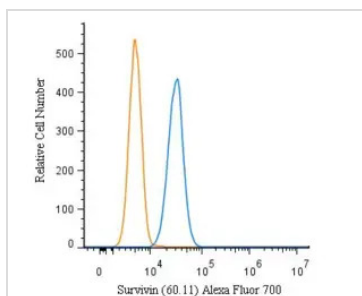
Green : primary antibody

Blue : Hoechst 33258



### GTX24470 IHC-P Image

IHC-P analysis of human ovary cancer tissue using GTX24470 Survivin antibody [60.11].



### GTX24470 FACS Image

FACS (Intracellular staining) analysis of U2OS cells using GTX24470 Survivin antibody [60.11].

Blue : Primary antibody

Orange : Isotype control

Dilution : 5 µg/mL

Fixation : 4% PFA

Permibilization : 0.1% saponin



For full product information, images and publications, please visit our [website](https://www.genetex.com).