

## beta Arrestin 1 (phospho Ser412) antibody

Cat. No. GTX24472

Host	Rabbit
Clonality	Polyclonal
Isotype	IgG
Applications	WB
Reactivity	Human, Mouse, Rat

Package

50 µl

## Applications

## Application Note

\*Optimal dilutions/concentrations should be determined by the researcher.

Suggested dilution	Recommended dilution
WB	0.1-1 µg/ml

Not tested in other applications.

Calculated MW 47 kDa. ( [Note](#) )

## Properties

Form	Liquid
Buffer	PBS, 0.1% BSA
Preservative	0.05% Sodium azide
Storage	Store as concentrated solution. Centrifuge briefly prior to opening vial. For short-term storage (1-2 weeks), store at 4°C. For long-term storage, aliquot and store at -20°C or below. Avoid multiple freeze-thaw cycles.
Concentration	Batch dependent (Please refer to the vial label for the specific concentration.)
Immunogen	synthesized phosphopeptide derived from the region of rat beta-arrestin-1 that contains serine 412.
Purification	Purified IgG
Conjugation	Unconjugated

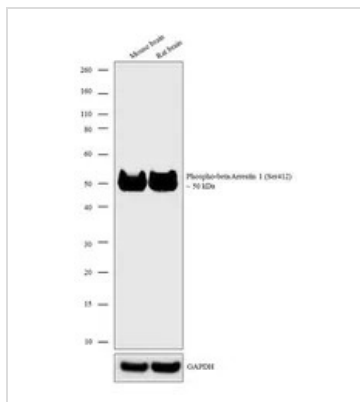
## Note

For laboratory research use only. Not for any clinical, therapeutic, or diagnostic use in humans or animals. Not for animal or human consumption.

Purchasers shall not, and agree not to enable third parties to, analyze, copy, reverse engineer or otherwise attempt to determine the structure or sequence of the product.

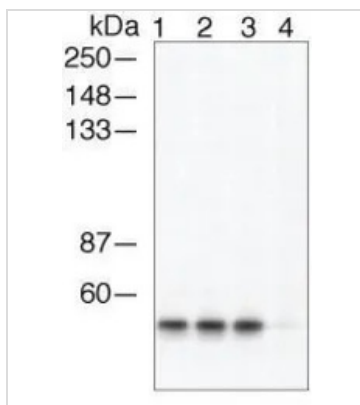


For full product information, images and publications, please visit our [website](#).

**DATA IMAGES**

**GTX24472 WB Image**

WB analysis of tissue extracts (30 µg lysate) of Mouse Brain (Lane 1) and Rat Brain (Lane 2) using GTX24472 beta Arrestin 1 (phospho Ser412) antibody.

Dilution : 0.5 µg/ml


**GTX24472 WB Image**

WB analysis of PC12 cell extracts were either not treated (Lane 1, 3) or treated (Lane 2, 4) with PP2A phosphatase using GTX24472 beta Arrestin 1 (phospho Ser412) antibody (Lane 3, 4) or b-arrestin-1 pan antibody (Lane 1, 2).



For full product information, images and publications, please visit our [website](https://www.genetex.com).