

WHIP antibody

Cat. No. GTX24731

Host	Rabbit
Clonality	Polyclonal
Isotype	IgG
Applications	WB, ELISA, IHC
Reactivity	Human

References (1)

Package

50 µg

Applications

Application Note

*Optimal dilutions/concentrations should be determined by the researcher.

Suggested dilution	Recommended dilution
WB	1:500-1:2000
ELISA	1:10000-1:40000
IHC	Assay dependent

Not tested in other applications.

Calculated MW 72 kDa. ([Note](#))

Properties

Form	Liquid
Buffer	20mM Potassium Phosphate, 150mM NaCl
Preservative	0.01% Sodium azide
Storage	Store as concentrated solution. Centrifuge briefly prior to opening vial. For short-term storage (1-2 weeks), store at 4°C. For long-term storage, aliquot and store at -20°C or below. Avoid multiple freeze-thaw cycles.
Concentration	1 mg/ml (Please refer to the vial label for the specific concentration.)
Immunogen	Synthetic peptide corresponding to an internal region of the WHIP1 protein.
Purification	Purified by antigen-affinity chromatography.
Conjugation	Unconjugated

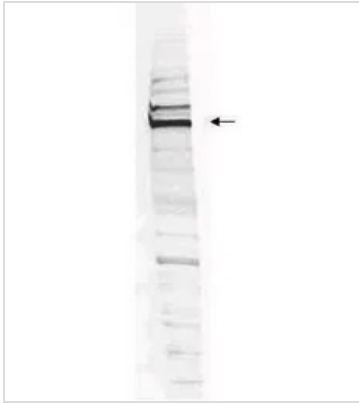
Note

For laboratory research use only. Not for any clinical, therapeutic, or diagnostic use in humans or animals. Not for animal or human consumption.

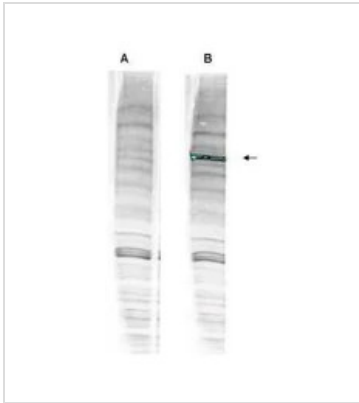
Purchasers shall not, and agree not to enable third parties to, analyze, copy, reverse engineer or otherwise attempt to determine the structure or sequence of the product.



For full product information, images and publications, please visit our [website](#).

DATA IMAGES

GTX24731 WB Image

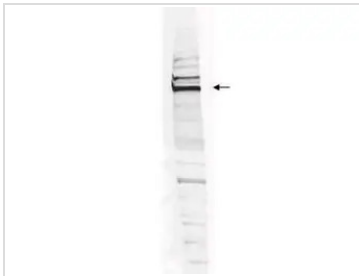
Western blot analysis is shown using GeneTex Affinity Purified anti-Human WHIP antibody (GTX24731) to detect Human WHIP present in a HEK293 whole cell lysate. ~30mg of lysate was loaded per lane for 4-20% gradient SDS-PAGE. Comparison to a molecular weight marker (not shown) indicates a primary band of ~96.0 kDa is detected. The identity of the minor band migrating at a slightly higher molecular weight is unknown, but may represent an alternate isoform of WHIP or post translational modification of the WHIP protein. The blot was incubated with a 1:200 dilution of the antibody at room temperature for 2 h followed by detection using infrared labeled Goat-a-Rabbit IgG [H&L] MX10 diluted 1:5,000 for 45 min. The fluorescence image was captured using the OdysseyR Infrared Imaging System developed by LI-COR.


GTX24731 WB Image

WB analysis of 293T whole cell lysate using GTX24731 WHIP antibody prior incubated with (Lane B) or without (Lane A) blocking peptide.

Loading : 30 µg

Dilution : 1:1000


GTX24731 WB Image

WB analysis of 293T whole cell lysate using GTX24731 WHIP antibody.

Loading : 30 µg

Dilution : 1:200



For full product information, images and publications, please visit our [website](https://www.genetex.com).