

Tau (phospho Ser199) antibody

Cat. No. GTX24749

Host	Rabbit
Clonality	Polyclonal
Isotype	IgG
Application	WB, ICC/IF, IHC-P, FACS, Functional Assay, IHC, IHC (Free Floating)
Reactivity	Human, Mouse, Rat, Dog

Reference (1)
Package
50 µl

APPLICATION

Application Note

*Optimal dilutions/concentrations should be determined by the researcher.

Suggested dilution	Recommended dilution
WB	Assay dependent
ICC/IF	1 µg/mL
IHC-P	1:20-1:200
FACS	3-5 µg/million cells
Functional Assay	Assay dependent
IHC	Assay dependent
IHC (Free Floating)	Assay dependent

Not tested in other applications.

Calculated MW 79 kDa. ([Note](#))

PROPERTIES

Form	Liquid
Buffer	PBS, 0.1% BSA, 50% Glycerol
Preservative	0.05% Sodium azide
Storage	Store as concentrated solution. Centrifuge briefly prior to opening vial. For short-term storage (1-2 weeks), store at 4°C. For long-term storage, aliquot and store at -20°C or below. Avoid multiple freeze-thaw cycles.
Concentration	Batch dependent (Please refer to the vial label for the specific concentration.)
Immunogen	The antiserum was produced against a chemically synthesized phosphopeptide derived from the region of human Tau that contains serine 199. The sequence is conserved in mouse and rat.
Purification	Purified by antigen-affinity chromatography
Conjugation	Unconjugated

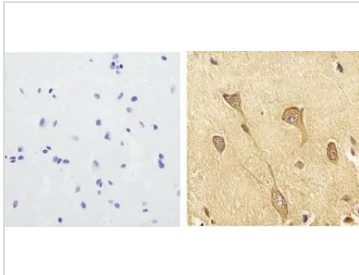


For full product information, images and publications, please visit our [website](#).

For laboratory research use only. Not for any clinical, therapeutic, or diagnostic use in humans or animals. Not for animal or human consumption.

Note

Purchasers shall not, and agree not to enable third parties to, analyze, copy, reverse engineer or otherwise attempt to determine the structure or sequence of the product.

DATA IMAGES

GTX24749 IHC-P Image

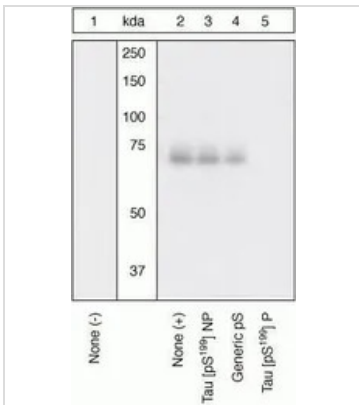
IHC-P analysis of human brain tissue using GTX24749 Tau (phospho Ser199) antibody.

Right : Primary antibody

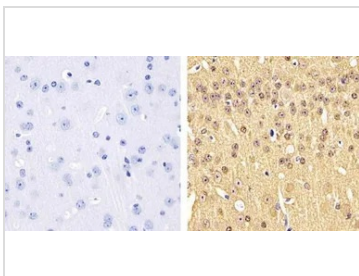
Left : Negative control without primary antibody

Antigen retrieval : 10mM sodium citrate (pH 6.0), microwaved for 8-15 min

Dilution : 1:100


GTX24749 WB Image

WB (peptide competition) analysis of human recombinant Tau untreated (Lane 1) or treated with GSK-3 beta (1 µg per µg Tau) for 45 minutes (Lanes 2-5) using GTX24749 Tau (phospho Ser199) antibody prior incubated with the non-phosphopeptide corresponding to the phosphopeptide immunogen (Lane 3), a generic phosphoserine-containing peptide (Lane 4), or the phosphopeptide immunogen (Lane 5) control. The data show that only the immunogen phosphopeptide blocks the signal, demonstrating the specificity of the antibody.


GTX24749 IHC-P Image

IHC-P analysis of mouse brain tissue using GTX24749 Tau (phospho Ser199) antibody.

Right : Primary antibody

Left : Negative control without primary antibody

Antigen retrieval : 10mM sodium citrate (pH 6.0), microwaved for 8-15 min

Dilution : 1:100



For full product information, images and publications, please visit our [website](https://www.genetex.com).