

# MEK1 + MEK2 (phospho Ser222) antibody

**Cat. No. GTX24750**

<b>Host</b>	Rabbit
<b>Clonality</b>	Polyclonal
<b>Isotype</b>	IgG
<b>Applications</b>	WB, ICC/IF
<b>Reactivity</b>	Human, Mouse, Rat

References ( 1 )

Package

50 µl

## Applications

### Application Note

\*Optimal dilutions/concentrations should be determined by the researcher.

Suggested dilution	Recommended dilution
WB	1:1,000
ICC/IF	Assay dependent

Not tested in other applications.

## Properties

<b>Form</b>	Liquid
<b>Storage</b>	Store as concentrated solution. Centrifuge briefly prior to opening vial. For short-term storage (1-2 weeks), store at 4°C. For long-term storage, aliquot and store at -20°C or below. Avoid multiple freeze-thaw cycles.
<b>Concentration</b>	Batch dependent (Please refer to the vial label for the specific concentration.)
<b>Immunogen</b>	Immunogen is a sequence surrounding the phosphorylated Ser222 of MEK1/2.
<b>Purification</b>	Purified IgG
<b>Conjugation</b>	Unconjugated

### Note

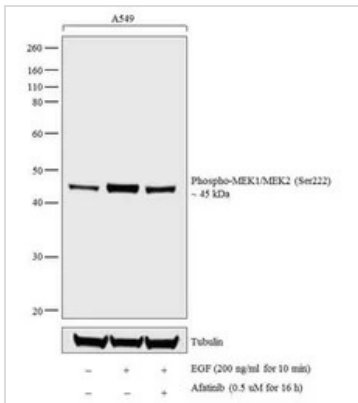
For laboratory research use only. Not for any clinical, therapeutic, or diagnostic use in humans or animals. Not for animal or human consumption.

Purchasers shall not, and agree not to enable third parties to, analyze, copy, reverse engineer or otherwise attempt to determine the structure or sequence of the product.



For full product information, images and publications, please visit our [website](#).

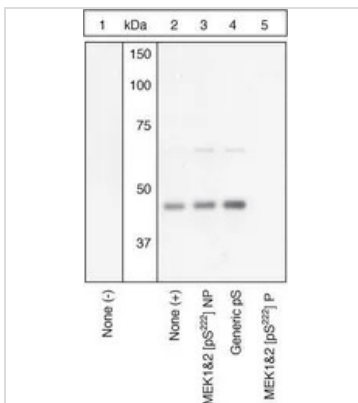
## DATA IMAGES



### GTX24750 WB Image

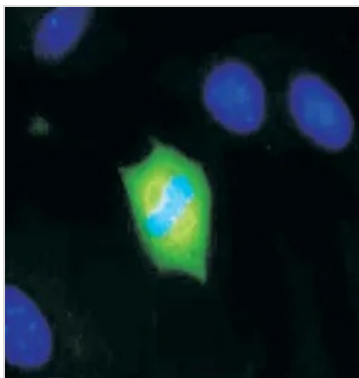
WB analysis of whole cell extracts (30 ug lysate) of A549 (Lane 1), treated with EGF (200 ng/ml for 10 min) (Lane 2), and treated with Afinib (0.5 uM for 16 h) followed by EGF (200 ng/ml for 10 min) using GTX24750 MEK1 + MEK2 (phospho Ser222) antibody.

Dilution : 1:1000



### GTX24750 WB Image

WB (peptide competition) analysis of NIH3T3 cells treated with 50 ng/mL PDGF for 15 minutes (Lane 2-5) using GTX24750 MEK1 + MEK2 (phospho Ser222) antibody prior incubated with the non-phosphopeptide corresponding to the phosphopeptide immunogen (Lane 3), a generic phosphoserine-containing peptide (Lane 4), or the phosphopeptide immunogen (Lane 5) control. The data show that only the immunogen phosphopeptide blocks the signal, demonstrating the specificity of the antibody.



### GTX24750 ICC/IF Image

ICC/IF analysis of mouse embryonic fibroblasts (MEFs) using GTX24750 MEK1 + MEK2 (phospho Ser222) antibody. The cell is actively dividing. Blue represents chromosomes in anaphase of mitotic cell division. Green shows mitotic spindle expressing phosphorylated MEK1, 2.



For full product information, images and publications, please visit our [website](https://www.genetex.com).