

Apg8 antibody

Cat. No. GTX24753

Host	Rabbit
Clonality	Polyclonal
Isotype	IgG
Applications	WB, IP, ELISA, IHC
Reactivity	Yeast

Package
250 µg

Applications

Application Note

*Optimal dilutions/concentrations should be determined by the researcher.

Suggested dilution	Recommended dilution
WB	1:4000-1:8000
IP	Assay dependent
ELISA	1:20000-1:100000
IHC	Assay dependent

Not tested in other applications.

Calculated MW 14 kDa. ([Note](#))

Properties

Form	Liquid
Buffer	20mM Potassium Phosphate, 150mM NaCl
Preservative	0.01% Sodium azide
Storage	Store as concentrated solution. Centrifuge briefly prior to opening vial. For short-term storage (1-2 weeks), store at 4°C. For long-term storage, aliquot and store at -20°C or below. Avoid multiple freeze-thaw cycles.
Concentration	5 mg/ml (Please refer to the vial label for the specific concentration.)
Immunogen	Recombinant yeast Apg8 protein.
Purification	IgG fraction This product is an IgG fraction antibody purified from monospecific antiserum by a multi-step process which includes delipidation, salt fractionation and ion exchange chromatography followed by extensive dialysis against the buffer stated above.
Conjugation	Unconjugated

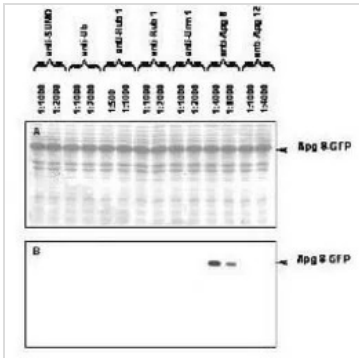


For full product information, images and publications, please visit our [website](#).

For laboratory research use only. Not for any clinical, therapeutic, or diagnostic use in humans or animals. Not for animal or human consumption.

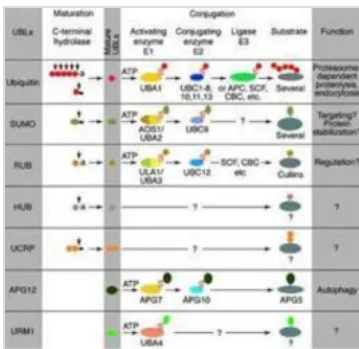
Note
 Purchasers shall not, and agree not to enable third parties to, analyze, copy, reverse engineer or otherwise attempt to determine the structure or sequence of the product.

DATA IMAGES



GTX24753 WB Image

Western blot of APG8 fusion protein. Anti-APG8 antibody generated by immunization with recombinant yeast APG8 was tested by western blot with other anti-UBL antibodies against E.coli lysates expressing the APG8-GFP fusion protein. All UBLs possess limited homology to Ubiquitin and to each other, therefore it is important to know the degree of reactivity of each antibody against each UBL. Panel A shows total protein staining using ponceau. Panel B shows specific reaction with APG8 using a 1:4,000 and 1:8,000 dilution of GeneTex's IgG fraction of Rabbit-anti-APG8 (Yeast) followed by reaction with a 1:15,000 dilution of HRP Goat-anti-Rabbit IgG



GTX24753 Image



For full product information, images and publications, please visit our [website](#).