

VAV1 (phospho Tyr160) antibody

Cat. No. GTX24763

Host	Rabbit
Clonality	Polyclonal
Isotype	IgG
Applications	WB, IP
Reactivity	Human

Package

50 µl

Applications

Application Note

*Optimal dilutions/concentrations should be determined by the researcher.

Suggested dilution	Recommended dilution
WB	0.1-1 µg/ml
IP	Assay dependent

Not tested in other applications.

Calculated MW 98 kDa. ([Note](#))

Properties

Form	Liquid
Buffer	PBS, 0.1% BSA
Preservative	0.05% Sodium azide
Storage	Store as concentrated solution. Centrifuge briefly prior to opening vial. For short-term storage (1-2 weeks), store at 4°C. For long-term storage, aliquot and store at -20°C or below. Avoid multiple freeze-thaw cycles.
Concentration	Batch dependent (Please refer to the vial label for the specific concentration.)
Immunogen	A chemically synthesized phosphopeptide derived from a region of human Vav1 that contains tyrosine 160
Purification	Purified IgG
Conjugation	Unconjugated

Note

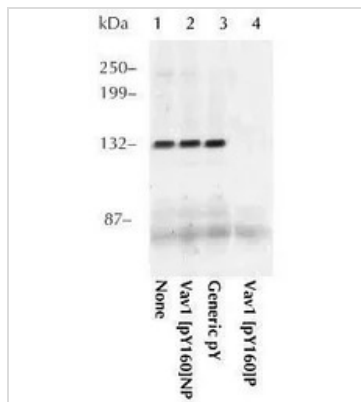
For laboratory research use only. Not for any clinical, therapeutic, or diagnostic use in humans or animals. Not for animal or human consumption.

Purchasers shall not, and agree not to enable third parties to, analyze, copy, reverse engineer or otherwise attempt to determine the structure or sequence of the product.



For full product information, images and publications, please visit our [website](#).

DATA IMAGES


GTX24763 IP Image

IP analysis of K562 cell extracts using GTX24763 VAV1 (phospho Tyr160) antibody.

The primary antibody was prior incubate with no peptide (1), the non-phosphopeptide corresponding to the immunogen (2), a generic phosphotyrosine containing peptide (3), or, the phosphopeptide immunogen (4)

WB antibody dilution : 0.5 µg/ml



For full product information, images and publications, please visit our [website](https://www.genetex.com).