

## Raf1 (phospho Ser621) antibody

**Cat. No. GTX24767**

<b>Host</b>	Rabbit
<b>Clonality</b>	Polyclonal
<b>Isotype</b>	IgG
<b>Applications</b>	WB, FCM, IP
<b>Reactivity</b>	Human, Rat

References ( 2 )

Package

50 µl

## Applications

**Application Note**

\*Optimal dilutions/concentrations should be determined by the researcher.

Suggested dilution	Recommended dilution
WB	Assay dependent
FCM	1:20
IP	Assay dependent

Not tested in other applications.

**Calculated MW** 73 kDa. ( [Note](#) )

## Properties

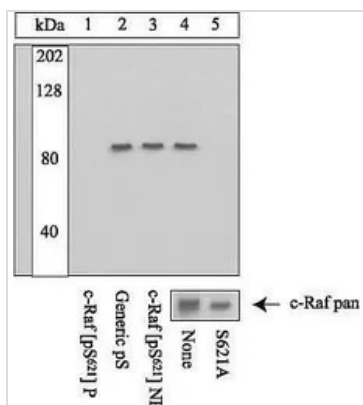
<b>Form</b>	Liquid
<b>Buffer</b>	PBS, 0.1% BSA, 50% Glycerol
<b>Preservative</b>	0.05% Sodium azide
<b>Storage</b>	Store as concentrated solution. Centrifuge briefly prior to opening vial. For short-term storage (1-2 weeks), store at 4°C. For long-term storage, aliquot and store at -20°C or below. Avoid multiple freeze-thaw cycles.
<b>Concentration</b>	Batch dependent (Please refer to the vial label for the specific concentration.)
<b>Immunogen</b>	The antiserum was produced against a chemically synthesized phosphopeptide derived from a region of human c-Raf that contains serine 621. The sequence is conserved in mouse and rat.
<b>Purification</b>	Purified by antigen-affinity chromatography
<b>Conjugation</b>	Unconjugated

**Note**

For laboratory research use only. Not for any clinical, therapeutic, or diagnostic use in humans or animals. Not for animal or human consumption.

Purchasers shall not, and agree not to enable third parties to, analyze, copy, reverse engineer or otherwise attempt to determine the structure or sequence of the product.

For full product information, images and publications, please visit our [website](#).

**DATA IMAGES**

**GTX24767 WB Image**

WB analysis of immunoprecipitates prepared HEK293 cells overexpressing wild-type c-Raf and stimulated with EGF (Lane 1-4) or c-Raf mutant S621A (Lane 5) using GTX24767 Raf1 (phospho Ser621) antibody.



For full product information, images and publications, please visit our [website](#).