

EIF2B epsilon (phospho Ser539) antibody

Cat. No. GTX24775

Host	Rabbit
Clonality	Polyclonal
Isotype	IgG
Applications	WB
Reactivity	Human, Mouse, Rat

References (7)

★★★★☆ Review (1)

Package

50 µl

Applications

Application Note

*Optimal dilutions/concentrations should be determined by the researcher.

Suggested dilution	Recommended dilution
WB	Assay dependent
Not tested in other applications.	

Calculated MW 80 kDa. ([Note](#))

Properties

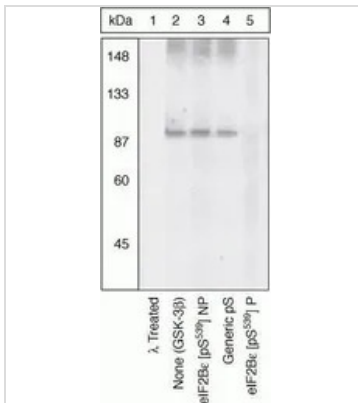
Form	Liquid
Buffer	PBS, 0.1% BSA, 50% Glycerol
Preservative	0.05% Sodium azide
Storage	Store as concentrated solution. Centrifuge briefly prior to opening vial. For short-term storage (1-2 weeks), store at 4°C. For long-term storage, aliquot and store at -20°C or below. Avoid multiple freeze-thaw cycles.
Concentration	Batch dependent (Please refer to the vial label for the specific concentration.)
Immunogen	The antiserum was produced against a chemically synthesized phosphopeptide derived from the region of rat eIF2Be that contains serine 535 (corresponding to serine 539 in the human sequence).
Purification	Purified by antigen-affinity chromatography
Conjugation	Unconjugated

Note

For laboratory research use only. Not for any clinical, therapeutic, or diagnostic use in humans or animals. Not for animal or human consumption.

Purchasers shall not, and agree not to enable third parties to, analyze, copy, reverse engineer or otherwise attempt to determine the structure or sequence of the product.

For full product information, images and publications, please visit our [website](#).

DATA IMAGES

GTX24775 WB Image

WB (peptide competition) analysis of recombinant eIF2B epsilon treated with lambda phosphatase (Lane 1) or GSK-3beta (Lane 2-5) using GTX24775 EIF2B epsilon (phospho Ser539) antibody prior incubated with the non-phosphopeptide corresponding to the phosphopeptide immunogen (Lane 3), a generic phosphoserine-containing peptide (Lane 4), or the phosphopeptide immunogen (Lane 5). The data show that only the immunogen phosphopeptide blocks the signal, demonstrating the specificity of the antibody.



For full product information, images and publications, please visit our [website](https://www.genetex.com).