

IRS1 (phospho Ser616) antibody

Cat. No. GTX24776

Host	Rabbit
Clonality	Polyclonal
Isotype	IgG
Applications	WB, ICC/IF, IHC-P, FCM, IHC
Reactivity	Human, Mouse, Rat

Package

50 µl

Applications

Application Note

*Optimal dilutions/concentrations should be determined by the researcher.

Suggested dilution	Recommended dilution
WB	1:1000
ICC/IF	Assay dependent
IHC-P	1:10-1:100
FCM	1:20
IHC	Assay dependent

Not tested in other applications.

Calculated MW 132 kDa. ([Note](#))

Properties

Form	Liquid
Buffer	PBS, 0.1% BSA, 50% Glycerol
Preservative	0.05% Sodium azide
Storage	Store as concentrated solution. Centrifuge briefly prior to opening vial. For short-term storage (1-2 weeks), store at 4°C. For long-term storage, aliquot and store at -20°C or below. Avoid multiple freeze-thaw cycles.
Concentration	Batch dependent (Please refer to the vial label for the specific concentration.)
Immunogen	The antiserum was produced against a chemically synthesized phosphopeptide derived from a region of IRS-1 that contains serine 616. The sequence is conserved in many species including human, mouse and rat.
Purification	Purified by antigen-affinity chromatography
Conjugation	Unconjugated

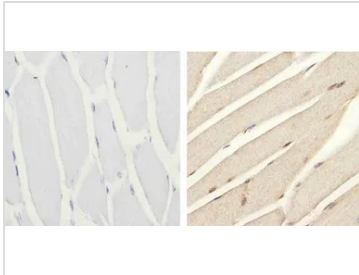


For full product information, images and publications, please visit our [website](#).

For laboratory research use only. Not for any clinical, therapeutic, or diagnostic use in humans or animals. Not for animal or human consumption.

Note

Purchasers shall not, and agree not to enable third parties to, analyze, copy, reverse engineer or otherwise attempt to determine the structure or sequence of the product.

DATA IMAGES

GTX24776 IHC-P Image

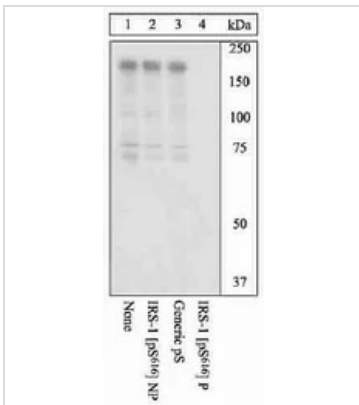
IHC-P analysis of mouse skeletal muscle tissue using GTX24776 IRS1 (phospho Ser616) antibody.

Right : Primary antibody

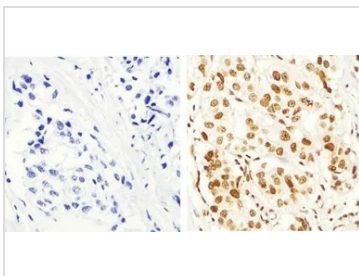
Left : Negative control without primary antibody

Antigen retrieval : 10mM sodium citrate (pH 6.0), microwaved for 8-15 min

Dilution : 1:20


GTX24776 WB Image

WB analysis of 293T cells transfected with wild-type human IRS-1 and treated with 100ng/mL TPA for 30 minutes using GTX24776 IRS1 (phospho Ser616) antibody prior incubated with the non-phosphopeptide corresponding to the phosphopeptide immunogen (Lane 2), a generic phosphoserine-containing peptide (Lane 3), or the phosphopeptide immunogen (Lane 4).


GTX24776 IHC-P Image

IHC-P analysis of human breast carcinoma tissue using GTX24776 IRS1 (phospho Ser616) antibody.

Right : Primary antibody

Left : Negative control without primary antibody

Antigen retrieval : 10mM sodium citrate (pH 6.0), microwaved for 8-15 min

Dilution : 1:100



For full product information, images and publications, please visit our [website](https://www.genetex.com).