

## Rb (phospho Thr826) antibody

Cat. No. GTX24779

Host	Rabbit
Clonality	Polyclonal
Isotype	IgG
Applications	WB, IHC-P, FCM
Reactivity	Human, Mouse

Package

50 µl

## Applications

## Application Note

\*Optimal dilutions/concentrations should be determined by the researcher.

Suggested dilution	Recommended dilution
WB	Assay dependent
IHC-P	1:10-1:100
FCM	1:20

Not tested in other applications.

**Calculated MW** 106 kDa. ([Note](#))

## Properties

Form	Liquid
Buffer	PBS, 0.1% BSA, 50% Glycerol
Preservative	0.05% Sodium azide
Storage	Store as concentrated solution. Centrifuge briefly prior to opening vial. For short-term storage (1-2 weeks), store at 4°C. For long-term storage, aliquot and store at -20°C or below. Avoid multiple freeze-thaw cycles.
Concentration	Batch dependent (Please refer to the vial label for the specific concentration.)
Immunogen	The antiserum was produced against a chemically synthesized phosphopeptide derived from a region of human Rb that contains threonine 826 (based on Swiss Protein database, accession number P06400). The sequence is conserved in mouse, rat and chicken.
Purification	Purified by antigen-affinity chromatography
Conjugation	Unconjugated

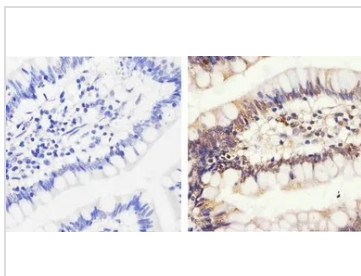


For full product information, images and publications, please visit our [website](#).

For laboratory research use only. Not for any clinical, therapeutic, or diagnostic use in humans or animals. Not for animal or human consumption.

**Note**

Purchasers shall not, and agree not to enable third parties to, analyze, copy, reverse engineer or otherwise attempt to determine the structure or sequence of the product.

**DATA IMAGES**

**GTX24779 IHC-P Image**

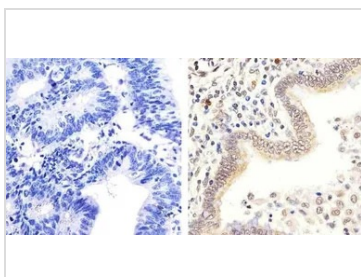
IHC-P analysis of human colon tissue using GTX24779 Rb (phospho Thr826) antibody.

Right : Primary antibody

Left : Negative control without primary antibody

Antigen retrieval : 10mM sodium citrate (pH 6.0), microwaved for 8-15 min

Dilution : 1:20


**GTX24779 IHC-P Image**

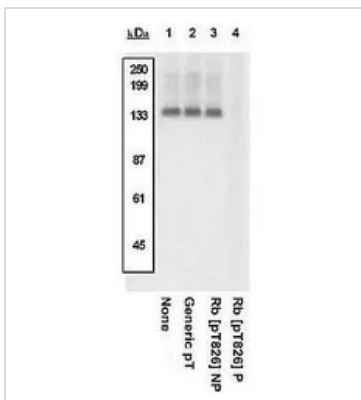
IHC-P analysis of human colon carcinoma tissue using GTX24779 Rb (phospho Thr826) antibody.

Right : Primary antibody

Left : Negative control without primary antibody

Antigen retrieval : 10mM sodium citrate (pH 6.0), microwaved for 8-15 min

Dilution : 1:20


**GTX24779 WB Image**

WB analysis of Jurkat cells in high growth phase using GTX24779 Rb (phospho Thr826) antibody prior incubated with a generic phosphothreonine containing peptide (Lane 2), with the non-phosphopeptide corresponding to the phosphopeptide immunogen (Lane 3), or the phosphopeptide immunogen (Lane 4). The data show that only the immunogen phosphopeptide blocks the signal, demonstrating the specificity of the antibody.

Dilution : 0.5mg/ml



For full product information, images and publications, please visit our [website](https://www.genetex.com).