

Rb (phospho Thr356) antibody

Cat. No. GTX24780

Host	Rabbit
Clonality	Polyclonal
Isotype	IgG
Application	WB
Reactivity	Human

Package
50 µl

APPLICATION

Application Note

*Optimal dilutions/concentrations should be determined by the researcher.

Suggested dilution	Recommended dilution
WB	0.1-1 µg/ml
Not tested in other applications.	

Calculated MW 106 kDa. ([Note](#))

PROPERTIES

Form	Liquid
Buffer	PBS pH7.4, 1mg/ml BSA
Preservative	0.05% Sodium azide, 0.05% ProClin 300
Storage	Store as concentrated solution. Centrifuge briefly prior to opening vial. For short-term storage (1-2 weeks), store at 4°C. For long-term storage, aliquot and store at -20°C or below. Avoid multiple freeze-thaw cycles.
Concentration	Batch dependent (Please refer to the vial label for the specific concentration.)
Immunogen	synthesized phosphopeptide derived from a region of human Rb that contains threonine 356
Purification	Purified by affinity chromatography
Conjugation	Unconjugated

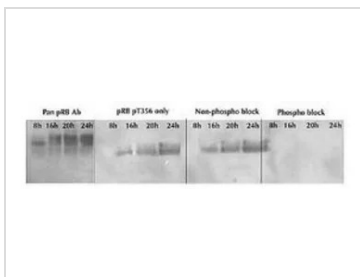
Note

For laboratory research use only. Not for any clinical, therapeutic, or diagnostic use in humans or animals. Not for animal or human consumption.

Purchasers shall not, and agree not to enable third parties to, analyze, copy, reverse engineer or otherwise attempt to determine the structure or sequence of the product.



For full product information, images and publications, please visit our [website](#).

DATA IMAGES

GTX24780 WB Image

WB analysis of Jurkat cells in high growth phase using GTX24780 Rb (phospho Thr356) antibody.

Dilution : 0.5 µg/ml



For full product information, images and publications, please visit our [website](#).