

Rb (phospho Ser249) antibody

Cat. No. GTX24788

Host	Rabbit
Clonality	Polyclonal
Isotype	IgG
Applications	WB
Reactivity	Human, Mouse

Package

50 µl

Applications

Application Note

*Optimal dilutions/concentrations should be determined by the researcher.

Suggested dilution	Recommended dilution
WB	1:500-1:2000

Not tested in other applications.

Calculated MW 106 kDa. ([Note](#))

Properties

Form	Liquid
Buffer	PBS, 0.1% BSA, 50% Glycerol
Preservative	0.05% Sodium azide
Storage	Store as concentrated solution. Centrifuge briefly prior to opening vial. For short-term storage (1-2 weeks), store at 4°C. For long-term storage, aliquot and store at -20°C or below. Avoid multiple freeze-thaw cycles.
Concentration	Batch dependent (Please refer to the vial label for the specific concentration.)
Immunogen	The antiserum was produced against a chemically synthesized phosphopeptide derived from a region of human Rb that contains serine 249 and threonine 252 (based on Swiss Protein database, accession number P06400). The sequence is conserved in human, mouse and rat.
Purification	Purified by antigen-affinity chromatography
Conjugation	Unconjugated

Note

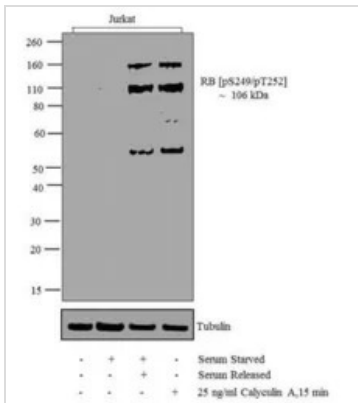
For laboratory research use only. Not for any clinical, therapeutic, or diagnostic use in humans or animals. Not for animal or human consumption.

Purchasers shall not, and agree not to enable third parties to, analyze, copy, reverse engineer or otherwise attempt to determine the structure or sequence of the product.



For full product information, images and publications, please visit our [website](#).

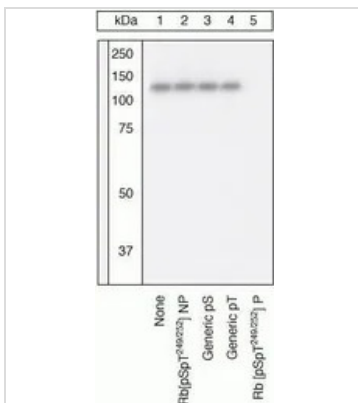
DATA IMAGES



GTX24788 WB Image

WB analysis of whole cell extracts (30 µg lysate) of Jurkat (Lane 1), Serum Starved Jurkat (Lane 2), Serum Starved for overnight following by serum release (Lane 3), and Jurkat treated for 15 min with 25 ng/ml of Calyculin A (lane 4) using GTX24788 Rb (phospho Ser249) antibody.

Dilution : 1:500-1:2000



GTX24788 WB Image

WB (peptide competition) analysis of Jurkat cells in high growth phase using GTX24788 Rb (phospho Ser249) antibody prior incubated with a generic phosphoserine-containing peptide (Lane 2), a generic phosphothreonine-containing peptide (Lane 3), the non-phosphopeptide corresponding to the phosphopeptide immunogen (Lane 4), or the phosphopeptide immunogen (Lane 5). The data show that only the immunogen phosphopeptide blocks the signal, demonstrating the specificity of the antibody.



For full product information, images and publications, please visit our [website](https://www.genetex.com).