

## PYK2 (phospho Tyr402) antibody

**Cat. No. GTX24800**

<b>Host</b>	Rabbit
<b>Clonality</b>	Polyclonal
<b>Isotype</b>	IgG
<b>Applications</b>	WB, ICC/IF, IHC-P, FCM, IP, IHC
<b>Reactivity</b>	Human, Mouse, Rat, Chicken

**Package**

50 µl

## Applications

**Application Note**

\*Optimal dilutions/concentrations should be determined by the researcher.

Suggested dilution	Recommended dilution
WB	Assay dependent
ICC/IF	1-2 µg/mL
IHC-P	1:10-1:50
FCM	1:20
IP	Assay dependent
IHC	Assay dependent

Not tested in other applications.

**Calculated MW** 116 kDa. ( [Note](#) )

## Properties

<b>Form</b>	Liquid
<b>Buffer</b>	PBS, 0.1% BSA, 50% Glycerol
<b>Preservative</b>	0.05% Sodium azide
<b>Storage</b>	Store as concentrated solution. Centrifuge briefly prior to opening vial. For short-term storage (1-2 weeks), store at 4°C. For long-term storage, aliquot and store at -20°C or below. Avoid multiple freeze-thaw cycles.
<b>Concentration</b>	Batch dependent (Please refer to the vial label for the specific concentration.)
<b>Immunogen</b>	The antiserum was produced against a chemically synthesized phosphopeptide derived from the region of human Pyk2 that contains tyrosine 402. The sequence is conserved in rat.
<b>Purification</b>	Purified by antigen-affinity chromatography
<b>Conjugation</b>	Unconjugated

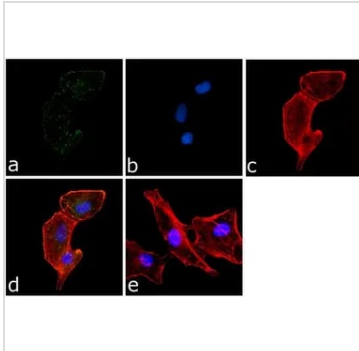


For full product information, images and publications, please visit our [website](#).

For laboratory research use only. Not for any clinical, therapeutic, or diagnostic use in humans or animals. Not for animal or human consumption.

**Note**

Purchasers shall not, and agree not to enable third parties to, analyze, copy, reverse engineer or otherwise attempt to determine the structure or sequence of the product.

**DATA IMAGES**

**GTx24800 ICC/IF Image**

ICC/IF analysis of A549 cells using GTx24800 PYK2 (phospho Tyr402) antibody. Panel e is a no primary antibody control.

Green : Primary antibody

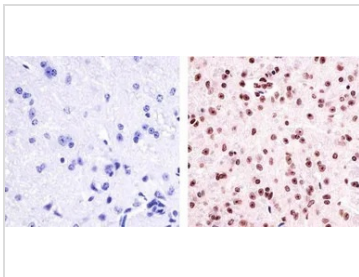
Blue : Nuclei

Red : Actin

Fixation : 4% paraformaldehyde

Permeabilization : 0.25% Triton X-100 for 10 minutes

Dilution : 1:250 dilution in 1% BSA incubated for 3 hours at room temperature


**GTx24800 IHC-P Image**

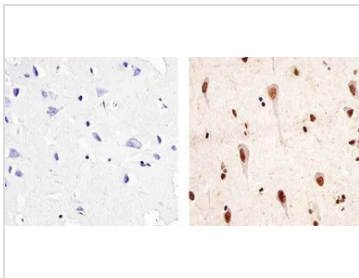
HC-P analysis of mouse brain tissue using GTx24800 PYK2 (phospho Tyr402) antibody.

Right : Primary antibody

Left : Negative control without primary antibody

Antigen retrieval : 10mM sodium citrate (pH 6.0), microwaved for 8-15 min

Dilution : 1:20


**GTx24800 IHC-P Image**

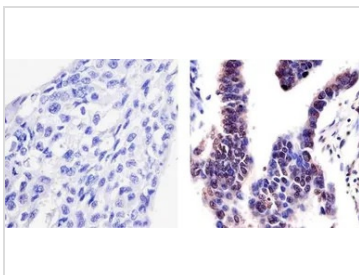
IHC-P analysis of human brain tissue using GTx24800 PYK2 (phospho Tyr402) antibody.

Right : Primary antibody

Left : Negative control without primary antibody

Antigen retrieval : 10mM sodium citrate (pH 6.0), microwaved for 8-15 min

Dilution : 1:20


**GTx24800 IHC-P Image**

IHC-P analysis of human lung adenocarcinoma tissue using GTx24800 PYK2 (phospho Tyr402) antibody.

Right : Primary antibody

Left : Negative control without primary antibody

Antigen retrieval : 10mM sodium citrate (pH 6.0), microwaved for 8-15 min

Dilution : 1:20



For full product information, images and publications, please visit our [website](https://www.genetex.com).