

PYK2 (phospho Tyr881) antibody

Cat. No. GTX24801

Host	Rabbit
Clonality	Polyclonal
Isotype	IgG
Applications	WB, FCM, IP
Reactivity	Human, Mouse, Rat, Chicken

Package
50 µl

Applications

Application Note

*Optimal dilutions/concentrations should be determined by the researcher.

Suggested dilution	Recommended dilution
WB	Assay dependent
FCM	1:20
IP	Assay dependent

Not tested in other applications.

Calculated MW 116 kDa. ([Note](#))

Product Note

Some cross-reactivity with Focal Adhesion Kinase phosphorylated at tyrosine 925 (the corresponding Grb 2 binding site) may be observed in cases where Focal Adhesion Kinase is overexpressed relative to PYK 2 in the same cell system.

Properties

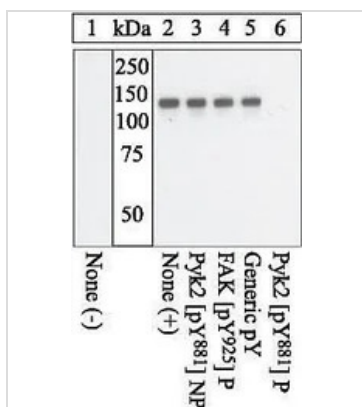
Form	Liquid
Buffer	PBS, 0.1% BSA, 50% Glycerol
Preservative	0.05% Sodium azide
Storage	Store as concentrated solution. Centrifuge briefly prior to opening vial. For short-term storage (1-2 weeks), store at 4°C. For long-term storage, aliquot and store at -20°C or below. Avoid multiple freeze-thaw cycles.
Concentration	Batch dependent (Please refer to the vial label for the specific concentration.)
Immunogen	The antiserum was produced against a chemically synthesized phosphopeptide derived from the region of human Pyk2 that contains tyrosine 881.
Purification	Purified by antigen-affinity chromatography
Conjugation	Unconjugated



For full product information, images and publications, please visit our [website](#).

For laboratory research use only. Not for any clinical, therapeutic, or diagnostic use in humans or animals. Not for animal or human consumption.

Note
Purchasers shall not, and agree not to enable third parties to, analyze, copy, reverse engineer or otherwise attempt to determine the structure or sequence of the product.

DATA IMAGES

GTX24801 WB Image

WB analysis of pervanadate-treated primary chicken embryo fibroblasts plated on fibronectin, either mock-transfected (Lane 1) or transfected with a Pyk2 expression vector (Lane 2-6) using GTX24801 PYK2 (phospho Tyr881) antibody. The data show that only the immunogen phosphopeptide blocks the signal, demonstrating the specificity of the antibody.



For full product information, images and publications, please visit our [website](#).