

## FAK (phospho Tyr397) antibody

**Cat. No. GTX24803**

<b>Host</b>	Rabbit
<b>Clonality</b>	Polyclonal
<b>Isotype</b>	IgG
<b>Applications</b>	WB, ICC/IF, IHC-Fr, IP, ChIP assay
<b>Reactivity</b>	Human, Mouse, Rat, Zebrafish, Drosophila, Cat, Dog, Chicken, Amphibians, Rhesus Monkey, Xenopus, Fish

References ( 7 )

Package

50 µl

## Applications

**Application Note**

\*Optimal dilutions/concentrations should be determined by the researcher.

Suggested dilution	Recommended dilution
WB	Assay dependent
ICC/IF	Assay dependent
IHC-Fr	Assay dependent
IP	Assay dependent
ChIP assay	Assay dependent

Not tested in other applications.

**Calculated MW** 119 kDa. ( [Note](#) )

## Properties

<b>Form</b>	Liquid
<b>Buffer</b>	PBS, 0.1% BSA, 50% Glycerol
<b>Preservative</b>	0.05% Sodium azide
<b>Storage</b>	Store as concentrated solution. Centrifuge briefly prior to opening vial. For short-term storage (1-2 weeks), store at 4°C. For long-term storage, aliquot and store at -20°C or below. Avoid multiple freeze-thaw cycles.
<b>Concentration</b>	Batch dependent (Please refer to the vial label for the specific concentration.)
<b>Immunogen</b>	The antiserum was produced against a chemically synthesized phosphopeptide derived from the region of human FAK that contains tyrosine 397. The sequence is conserved in mouse, rat, chicken and frog.
<b>Purification</b>	Purified by antigen-affinity chromatography
<b>Conjugation</b>	Unconjugated

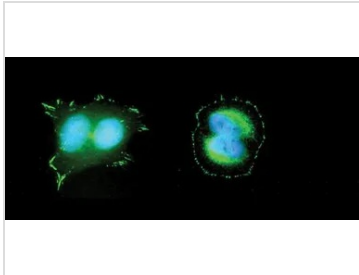


For full product information, images and publications, please visit our [website](#).

For laboratory research use only. Not for any clinical, therapeutic, or diagnostic use in humans or animals. Not for animal or human consumption.

**Note**  
 Purchasers shall not, and agree not to enable third parties to, analyze, copy, reverse engineer or otherwise attempt to determine the structure or sequence of the product.

DATA IMAGES



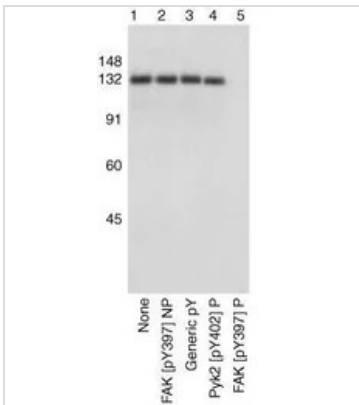
**GTX24803 ICC/IF Image**

ICC/IF analysis of HeLa cells using GTX24803 FAK (phospho Tyr397) antibody.

Green : Primary antibody

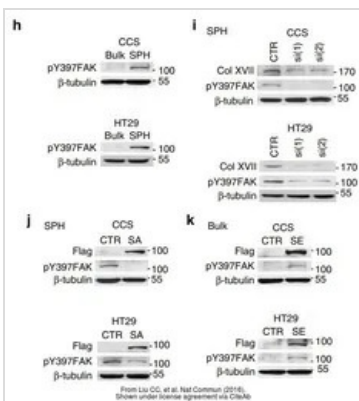
Blue : cell nucleus

Fixation/Permeabilization : ice-cold 95% methanol



**GTX24803 WB Image**

WB analysis of samples using GTX24803 FAK (phospho Tyr397) antibody prior incubated with the non-phosphopeptide corresponding to the phosphopeptide immunogen (Lane 2), a generic phosphotyrosine containing peptide(Lane 3), the phosphopeptide corresponding to FAK (phospho Tyr402) , or the phosphopeptide immunogen (Lane 5). The data show that only the immunogen phosphopeptide blocks the signal, demonstrating the specificity of the antibody.



**GTX24803 WB Image**

The data was published in the journal Nat Commun in 2016. [PMID: 27306323](https://pubmed.ncbi.nlm.nih.gov/27306323/)



For full product information, images and publications, please visit our [website](http://www.genetex.com).